



O.P. JINDAL GLOBAL
INSTITUTION OF EMINENCE DEEMED TO BE
UNIVERSITY
A Private University Promoting Public Service



Jindal Global Law School
India's First Global Law School



5-YEAR LAW

PROGRAMMES

at

JINDAL GLOBAL LAW
SCHOOL

B.Com LL.B. (Hons) | B.B.A. LL.B. (Hons) | B.A. LL.B. (Hons)



JGU | O.P. JINDAL GLOBAL UNIVERSITY

O.P. Jindal Global University (JGU) is a non-profit, multi-disciplinary and research oriented university founded in 2009. JGU was established as a philanthropic initiative of its Founding Chancellor, Mr. Naveen Jindal in memory of his father, Mr. O.P. Jindal.

JGU has over 14,000 students, 1100+ full-time faculty members, and 2900+ administrative staff in its fully residential campus. JGU's twelve schools focus on Law, Business & Management, International Affairs, Public Policy, Liberal Arts & Humanities, Journalism, Art & Architecture, Banking & Finance, Environment & Sustainability, Psychology & Counselling, Languages & Literature and Public Health & Human Development. Over the last decade, JGU has grown into an institution that brings full-time faculty from 50+ countries in the world, students from 75+ countries and has collaborated with 500+ leading institutions in 75+ countries which makes the learning experience truly international.

JGU has been ranked as India's Number 1 Private University for three years in a row by the prestigious QS World University Rankings 2023. JGU has been recognised among the Top 150 universities globally under the age of 50 years by the QS Young University Rankings. JGU has also been recognised in the Top 500 Universities as per the QS Graduate Employability Rankings 2022. The Jindal Global Law School is ranked Number 1 in India for five years in a row and is the only law school in India among the Global Top 100 law schools by the QS World University Rankings by Subject 2024. In 2020, JGU was recognised as an 'Institution of Eminence' by the Ministry of Education, Government of India.

JINDAL | JGLS GLOBAL LAW SCHOOL

Jindal Global Law School (JGLS), India's first global law school is situated on a 100-acre state of the art residential JGU campus. The vision of JGU is to promote global courses, global programmes, global curriculum, global research, global collaborations, and global interaction through a global faculty. In the academic year 2025-26, JGLS offers three year B.A. in Artificial Intelligence & Law, B.A. Criminology & Criminal Justice, B.A. Legal Studies programme; five year B.Com. LL.B. (Hons.), B.B.A. LL.B. (Hons.) and B.A. LL.B. (Hons.), programme; a three year LL.B. and a one year LL.M. programme. The LL.M. programme of JGLS is offered for law graduates, corporate lawyers, legal practitioners, civil servants, diplomats and judges with ten options for specialisation. Jindal Global Law School has been Number 1 in India and 72nd in the world in the subject category 'Law' as per QS World University Ranking 2024.

FOUNDING PHILOSOPHY OF THE PROGRAMMES: WHAT WILL BE TAUGHT?

The functions of law in society

Law is the network of human relations

Human interactions in social markets

Market is the social site of human interactions

Rule of law

Social order is a legal order in politics, trade, and commerce

5-Year programmes teach students law through social facts as they manifest in politics, trade, and commerce. Knowledge of social facts provides students a sense of being social subjects and knowledge of law helps them understand the organization and dynamics of society.



MULTI-DISCIPLINARY TAXONOMY

LIBERAL DISCIPLINES

3 'Major'
Courses
each in B.A.,
B.B.A., & B.Com
LL.B.

11 Common
'Minor' Courses
(core & elective)

LAW

General
Courses

Honours
Courses

Elective
Courses



“1 PROGRAMME, 3 SYSTEMS” COURSE SHARING ACROSS B.COM/B.B.A./B.A., LL.B. (HONS) PROGRAMMES

A single programme, which gives students the opportunity to make differentiations through elective courses, apart from the 3 programme-specific major courses.

DIFFERENTIATIONS

B.Com LL.B. (Hons)	B.B.A. LL.B. (Hons)	B.A. LL.B. (Hons)
Auditing & Secretarial Practice	Business Environment	History I
Principles of Accounting	Principles of Marketing & Management	History II
Business Psychology Organisational Behavior	Business Psychology Organisational Behavior	Legal Psychology

6 elective courses to choose from a pool of 200 elective courses.

COMMONALITIES

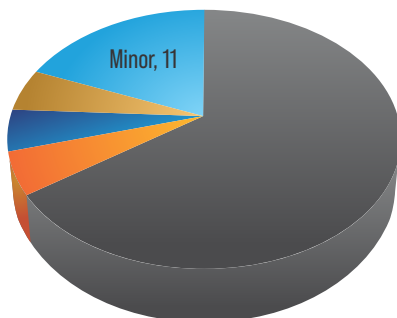
B.Com LL.B. (Hons)	B.B.A. LL.B. (Hons)	B.A. LL.B. (Hons)
24 law courses including 4 clinical courses		
8 honors courses in law		
Moot Courts through JGLS Moot Court Society		
Arbitration, Negotiation, and Mediation through the JGLS ADR Society		
Short-term study abroad and dual-degree opportunities		

COURSE DISTRIBUTION ACROSS PROGRAMMES

3 Major
B.Com LL.B. (Hons)

3 Major
B.B.A. LL.B. (Hons)

3 Major
B.A. LL.B. (Hons)



38
Law Courses for
B.A. LL.B. (Hons), B.B.A. LL.B. (Hons),
B.Com LL.B. (Hons)

■ Law Courses for All ■ Major B.Com ■ Major B.B.A. ■ Major B.A. ■ Minor

COURSE PROGRESSION

1

6 Choice-Based
Law Electives

3

11 Common
Minor Courses

2

32 Common
Law Courses

4

3 Programme-
Specific Major
Courses

NOTE OF CLARIFICATION & EXPLANATION ON CHOOSING THE B.COM LL.B. (HONS), B.B.A. LL.B. (HONS) or B.A. LL.B. (HONS) PROGRAMME @ JGLS

1

Identical and Equal Programmes: The B.Com LL.B. (Hons), B.B.A. LL.B. (Hons), and B.A. LL.B. (Hons) are all identical 5-year Law degree programmes. They are absolutely equal in law and otherwise. There is practically no difference in all the three courses so far as their validity, use or legal value is concerned. They entitle you to become qualified lawyers in the same way and do not in any way differ from each other when it comes to being recognised or respected in the legal community.

2

Same Law Subjects: It is important to recognise that the Bar Council of India prescribed courses/subjects in law are exactly same in all three programmes. The only difference is that in the first two years of study, a B.Com LL.B. (Hons) student studies courses in commerce and accountancy, the B.B.A. LL.B. (Hons) student studies courses in business and management and B.A. LL.B. (Hons) student studies courses in social sciences and humanities. But this also does not have any major impact because this is a law programme and your law related subjects do not change.

3

Law Degree: The B.Com LL.B. (Hons), B.B.A. LL.B. (Hons), and B.A. LL.B. (Hons) are Law degrees and NOT a B.Com, B.B.A., or B.A. degrees. So all the three programmes are equal and same.

4

No difference in corporate legal careers and opportunities: Evidence has proved that there is no difference in career opportunities for a B.Com LL.B. (Hons), B.B.A. LL.B. (Hons), and B.A. LL.B. (Hons) in law firms or companies where students seek a career in corporate law.

Your Interest should help you decide: If you have commerce background or you like subjects like accountancy, business studies, etc., you should opt for the B.Com LL.B. (Hons) programme. If you enjoy and prefer studying courses in business, management, marketing, etc., you should choose B.B.A. LL.B. (Hons) programme. If you enjoy and take interest in studying courses in social sciences and humanities like political science, history, sociology, economics, English etc., you should choose B.A. LL.B. (Hons).

5

No Mathematics in B.Com LL.B. (Hons) or B.B.A. LL.B. (Hons): Mathematics is not a mandatory course in B.Com LL.B. (Hons), or B.B.A. LL.B. (Hons) programme. Students who do not wish to study mathematics as a part of their B.Com LL.B. (Hons), or B.B.A. LL.B. (Hons) curriculum are absolutely free to do so. There is absolutely NO advantage or disadvantage of pursuing one programme over the other. All the three 5-year law programmes are absolutely equal and same in terms of their value and learning potential.

6

Note: This note of guidance is being issued to help you make an informed decision. You may feel free to take advice of your family and friends. As all the programmes are equal, you must stick to the decision you make while choosing your option at the time of making fee payment.

COURSE STRUCTURE

COURSE	B.COM LL.B. (HONS)	B.B.A. LL.B. (HONS)	B.A. LL.B. (HONS)	CREDITS
SEMESTER 1				
1	English I	English I	English I	4
2	Foundations of Social Sciences I	Foundations of Social Sciences I	Foundations of Social Sciences I	4
3	International Relations	International Relations	International Relations	4
4	Law of Torts and Consumer Protection	Law of Torts and Consumer Protection	Law of Torts and Consumer Protection	4
5	Legal Methods	Legal Methods	Legal Methods	4
TOTAL CREDITS				20

SEMESTER 2				
1	English II	English II	English II	4
2	Foundations of Social Sciences II	Foundations of Social Sciences II	Foundations of Social Sciences II	4
3	History of Courts, Legislature & Legal Profession in India	History of Courts, Legislature & Legal Profession in India	History of Courts, Legislature & Legal Profession in India	4
4	Law of Contracts I	Law of Contracts I	Law of Contracts I	4
5	Audit Practice and Secretarial Practice	Business Environment	History I	4
TOTAL CREDITS				20

SEMESTER 3				
1	Economics I	Economics I	Economics I	4
2	Family Law I	Family Law I	Family Law I	4
3	Gender and Society	Gender and Society	Gender and Society	4
4	Law of Contracts II	Law of Contracts II	Law of Contracts II	4
5	Law of Crimes	Law of Crimes	Law of Crimes	4
6	Principles of Accounting	Principles of Management	History II	4
TOTAL CREDITS				24

SEMESTER 4				
1	Constitutional Law I	Constitutional Law I	Constitutional Law I	4
2	Criminal Procedure Code	Criminal Procedure Code	Criminal Procedure Code	4
3	Economics II	Economics II	Economics II	4
4	Family Law II	Family Law II	Family Law II	4
5	Property Law	Property Law	Property Law	4
6	Business Psychology and Organizational Behaviour	Business Psychology and Organizational Behaviour	Legal Psychology	4
TOTAL CREDITS				24

COURSE	B.COM LL.B. (HONS)	B.B.A. LL.B. (HONS)	B.A. LL.B. (HONS)	CREDITS
SEMESTER 5				
1	Civil Procedure Code	Civil Procedure Code	Civil Procedure Code	4
2	Company Law I	Company Law I	Company Law I	4
3	Constitutional Law II	Constitutional Law II	Constitutional Law II	4
4	Jurisprudence	Jurisprudence	Jurisprudence	4
5	Law of Evidence	Law of Evidence	Law of Evidence	4
6	Corporate Finance	Corporate Finance	Non-law Elective 1	4
TOTAL CREDITS				24
SEMESTER 6				
1	Administrative Law	Administrative Law	Administrative Law	4
2	Alternative Dispute Resolution	Alternative Dispute Resolution	Alternative Dispute Resolution	4
3	Company Law II	Company Law II	Company Law II	4
4	Law & Critique	Law & Critique	Law & Critique	4
5	Public International Law	Public International Law	Public International Law	4
6	Non-law Elective 1	Non-law Elective 1	Non-law Elective 2	4
TOTAL CREDITS				24
SEMESTER 7				
1	Environmental Law	Environmental Law	Environmental Law	4
2	Intellectual Property Rights	Intellectual Property Rights	Intellectual Property Rights	4
3	Human Rights Law and Theory	Human Rights Law and Theory	Human Rights Law and Theory	4
4	Law of Taxation	Law of Taxation	Law of Taxation	4
5	Law Elective 1	Law Elective 1	Law Elective 1	4
6	Law Elective 2	Law Elective 2	Law Elective 2	4
TOTAL CREDITS				24
SEMESTER 8				
1	Drafting, Pleading & Conveyance	Drafting, Pleading & Conveyance	Drafting, Pleading & Conveyance	4
2	International Trade Law	International Trade Law	International Trade Law	4
3	Law of Banking	Law of Banking	Law of Banking	4
4	Moot Court and Trial Advocacy	Moot Court and Trial Advocacy	Moot Court and Trial Advocacy	4
5	Law Elective 3	Law Elective 3	Law Elective 3	4
6	Law Elective 4	Law Elective 4	Law Elective 4	4
TOTAL CREDITS				24
SEMESTER 9				
1	Labour Law I	Labour Law I	Labour Law I	4
2	Interpretation of Statutes	Interpretation of Statutes	Interpretation of Statutes	4
3	Law Elective 5	Law Elective 5	Law Elective 5	4
TOTAL CREDITS				12
SEMESTER 10				
1	Labour Law II	Labour Law II	Labour Law II	4
2	Professional Ethics	Professional Ethics	Professional Ethics	4
	Law Elective 6	Law Elective 6	Law Elective 6	4
TOTAL CREDITS				12



FACULTY PROFILE

The international educational background and experience of JGLS faculty members augurs well for our inter-disciplinary approach towards legal education. Our faculty members have outstanding educational qualifications from reputed law schools of the world including Harvard Law School, Yale Law School, London School of Economics and Political Science, University of Oxford and University of Cambridge. The global orientation of our faculty members to contribute to teaching and research is the unique characteristic of JGLS.

301. PROF. (DR.) C. RAJ KUMAR

Professor & Vice Chancellor
LL.B. (University of Delhi); B.C.L. (University of Oxford); LL.M. (Harvard University); S.J.D. (Hong Kong)

302. PROF. ALLIYA ANJUM

Professor and Assistant Director, Centre for Human Rights Studies
LL.B. (University of Kashmir); LL.M. (SOAS University of London); LL.M. (Tufts University)

303. PROF. (DR.) KASIM BALARABE

Professor & Associate Dean
LL.B. (Ahmadu Bello University, Nigeria); LL.M. (University of Geneva); LL.M. (Vrije University, Ph.D. (Maastricht University)

304. PROF. (DR.) NIHARIKA BANERJEA

Professor
B.A. (Hons.) (University of Calcutta); M.A. & M.Phil. (University of Delhi); Ph.D. (University at Buffalo)

305. PROF. (DR.) SUMIT BAUDH

Professor and Executive Director, Centre on Public Law and Jurisprudence
B.A. LL.B. (Hons.) (NLSIU, Bangalore); LL.M. (LSE, London); S.J.D. (University of California, Los Angeles)

306. PROF. SUBHOMY BHATTACHARJEE

Professor of Practice & Director, Centre for Regulatory Governance
PG Dip. In Journalism, IIMC; M.A. (Econ.), Delhi University

307. PROF. (DR.) SHILPI BHATTACHARYA

Professor
B.A. LL.B. (Hons.) (WBNUSJ, Kolkata); LL.M. (University of Virginia); Ph.D. (Erasmus University Rotterdam, The Netherlands; University of Bologna, Italy, and University of Hamburg, Germany)

308. PROF. AMIT BINDAL

Professor
B.A. (University of Delhi); LL.B. (University of Delhi); LL.M. (IL, Delhi); Ph.D. candidate (Jadavpur University)

309. PROF. (DR.) AGNIESZKA GORA BLASZCZYKOWSKA

Professor
Master in Law (University of Lodz, Poland); Ph.D. (University of Lodz, Poland)

310. PROF. AVIRUP BOSE

Professor and Assistant Director, Centre for International Trade and Economic Law
B.A. LL.B. (Hons.) (WBNUSJ, Kolkata); LL.M. (Harvard University)

311. PROF. (DR.) ARUP K. CHATTERJEE

Professor
M.A. (Jawaharlal Nehru University, New Delhi); M.Phil. (Jawaharlal Nehru University, New Delhi); Ph.D. (Jawaharlal Nehru University, New Delhi)

312. PROF. (DR.) B. S. CHIMNI

Distinguished Professor of International Law Member, Law School of Doctoral Curriculum Institute, (Panjab University); LL.M. (University of Bombay); Ph.D. (Jawaharlal Nehru University, New Delhi)

313. PROF. (DR.) COSMIN IOAN CORENDEA

Professor & Vice Dean
J.D. (Faculty of Law, Ecological University); PG Studies SNSPA, Romania); LL.M. Cum Laude (St. Thomas University, Miami); S.J.D. (Golden Gate University, San Francisco)

314. PROF. (DR.) SAMEENA DALWAI

Professor & Assistant Director, Centre for Women, Law and Social Change
B.A. LL.B. (University of Mumbai); LL.M. (University of Warwick); Ph.D. (Keele University)

315. PROF. MICHAEL C. DAVIS

Professor of Law and International Affairs
B.A. (Ohio State University); J.D. (University of California); LL.M. (Yale Law School)

316. PROF. (DR.) MERCY DEBORAH

Professor
B.A. (Hons.) (University of Delhi); LL.B. (University of Delhi); LL.M. (IL, Delhi); Ph.D. (NLU, Delhi)

317. PROF. (DR.) RENU EMILE

Professor
M.B.A. (University of Waikato); M.M.S. (University of Waikato); Ph.D. (Auckland University of Technology)

318. PROF. (DR.) ALEXANDER CHRISTOPH FISCHER

Professor and Director, Ph.D. Programme and Executive Director, Centre on Public Law and Jurisprudence
B.A. (London School of Economics, London); M.A. (University of Heidelberg); LL.M. (London School of Economics, London); Ph.D. (University of Heidelberg)

319. PROF. SAM BORIS GARKAWA

Professor
B.Sc. (University of Melbourne); LL.B. (Monash University); LL.M. (University of London); LL.M. (Sydney University)

320. PROF. KHAGESH GAUTAM

Professor
LL.B. (University of Delhi); LL.M. (Columbia University); Ph.D. candidate (Indiana University)

321. PROF. (DR.) TONY GEORGE

Professor
B.A.L. (Kerala Law Academy College, Thrissur); B.A. LL.B. (Kerala Law Academy College, Thrissur); LL.M. (University of Kerala); M.Phil. (WBNUSJ, Kolkata); LL.M. (Dalhousie University, Canada); Ph.D. (Dalhousie University, Canada)

322. PROF. EIRIKSSON GUDMUNDUR

Professor and Executive Director, Centre for International Legal Studies, JGLS and Advisor, International Office and Global Initiatives
B.A.; B.S. (Rutgers); LL.B. (Hons.) (Kings College London); LL.M. (Columbia University)

323. PROF. (DR.) JASMEET GULATI

Professor & Vice Dean
B.A. (Panjab University); LL.B. (Panjab University); M.A. (Panjab University); LL.M. (University of Cambridge); Ph.D. (Panjab University)

324. PROF. (DR.) ARPITA GUPTA

Professor & Dean of Research
B.A. (History) (University of Delhi); LL.B. (University of Delhi); LL.M. (Catholic Global School of Law, Lisbon); LL.M. (University of Wisconsin Law School); S.J.D. (University of Wisconsin Law School)

325. PROF. (DR.) INDRANATH GUPTA

Professor & Dean of Data, Innovation and Technology
LL.B. (University of Calcutta); LL.M. (University of East Anglia); LL.M. (University of Aberdeen); Ph.D. (Brunel University, West London)

326. PROF. (DR.) PANKAJ GUPTA

Professor
CMA; Fellow of ICAI; M.Com.; Ph.D. (University of Lucknow); GPCS. (Harvard University)

327. PROF. SANDHYA GUPTA

Professor of Accounting Practice
B.Com. (Garhwal University, Dehradun); CMA (Institute of Cost Accountants of India); FCA (Institute of Chartered Accountants of India)

328. PROF. SANGSEOK HA

Professor
LL.B. (Kyungpook National University); LL.M. (Kyungpook National University); LL.M. (Indiana University); Ph.D. (Kyungpook National University)

329. PROF. S. M DAUD HASSAN

Professor
LL.B. LL.M. (University of Rajasthan); LL.M. (University of Sydney) Ph.D. (University of Wollongong)

330. PROF. (DR.) TAMARA HOVORON

Professor
Doctor of Psychological Sciences (National Pedagogical Drahomanov University, Kyiv)

331. PROF. (DR.) YINGHONG HUANG

Professor
B.A. (Xia Men University); M.A. (Sun Yat-sen University); Ph.D. (Sun Yat-sen University)

332. PROF. DIPIKA JAIN

Professor & Vice Dean
LL.B. (University of Delhi); LL.M. (Dalhousie University, Canada); (2007) LL.M. (Harvard University) (2009)

333. PROF. (DR.) RAMIN JAHANBEGLOO

Professor & Vice Dean and Executive Director, Mahatma Gandhi Centre for Peace Studies
M.A. (Double Major: (Hope and French Revolution) M.A. (Double Major: (Classical and the art of War); M.A. (Double Major: (Medieval and the Renaissance); Ph.D. (Major: (Philosophy Minor: (Political Science, (Soviet Union) (Paris, France); Post-Doc. (Iranian Intellectuals and Modernity, Harvard University)

334. PROF. NEMIKA JHA

Professor & Vice Dean
B.A. LL.B. (Hons.) (WBNUSJ, Kolkata); LL.M. (Harvard University); S.J.D. (Fordham University)

335. PROF. (DR.) MATHEW JOHN

Professor & Executive Director, Centre on Public Law and Jurisprudence
B.A. LL.B. (Hons.) (NLSIU, Bangalore); LL.M. (University of Warwick); Ph.D. (London School of Economics, London)

336. PROF. (DR.) SANDEEP KINDO

Professor
B.A. LL.B. (NLSIU, Bangalore); LL.M. (University of Notre Dame); J.S.M. (Stanford University); Ph.D. (University of Wisconsin-Madison)

337. PROF. (DR.) PALLAVI KISHORE

Professor & Assistant Director, Centre for International Trade and Economic Law
B.Com. (Hons.) (University of Delhi); LL.B. (University of Delhi); LL.M. (Aix-Marseille III, France); D.E.A. (Aix-Marseille III, France); Ph.D. (Aix-Marseille III, France)

338. PROF. (DR.) SALONI MAYUR KHANDERIA

Professor, JGLS & Deputy Controller of Examinations
B.A. LL.B. (Symbiosis, Pune); LL.M. (NLSIU, Bangalore); LL.M. (University of Johannesburg); Ph.D. (NLU, Delhi)

339. PROF. MANASI KUMAR

Professor
B.A. (Lewis & Clark Law School, Portland); J.D. (Lewis & Clark Law School, Portland)

340. PROF. GAGAN KUMAR KWATRA

Professor and Executive Director, Centre for Comparative and International Taxation Studies
B.Com. (University of Delhi); LL.B. (University of Delhi); LL.M. (University of Delhi); LL.M. (Harvard University)

341. PROF. KARAN LATAYAN

Professor & Controller of Examinations
B.A. LL.B. (Hons.) (RSNLU, Purjib); LL.M. (New York University)

342. PROF. (DR.) UPASANA MAHANTA

Professor, JGLS and Dean, Admissions and Outreach
B.A. (Hons.) (University of Delhi); M.A. (University of Delhi); M.Phil. (Jawaharlal Nehru University, New Delhi); Ph.D. (Jawaharlal Nehru University, New Delhi)

343. PROF. ARIYA B. MAJUMDAR

Professor
J.A.; B.Sc.; LL.B. (WBNUSJ, Kolkata); LL.M. (Tilane University)

344. PROF. ANAND PRAKASH MISHRA

Director Law Admissions & Professor of Legal Practice & Vice Dean (Admissions, Outreach & Institution Building)
B.A. (Pina University); LL.B.; LL.M. (University of Delhi)

345. PROF. EESHA MOHAPATRA

Professor
B.S.L. LL.B. (University of Pune); LL.M. (King's College London)

046. PROF. COURTENAY ERIN MORRIS
Professor of Legal Practice
B.A. (Cornell University);
J.D. (University of Michigan)

047. PROF. NISHA NAIR
Professor & Vice Dean (Admissions & Outreach)
B.A. (Hons.) (University of Delhi); M.A. (University of Delhi);
B.Ed.; M.Ed. (Guru Gobind Singh Indraprastha University);
Ph.D. candidate (Jama Millia Islamia)

048. PROF. (DR.) JAMES J. NEDUMPARA
Professor
LL.B. (Mahatma Gandhi University, Meghalaya);
LL.M. (University of Cambridge); LL.M. (New York University);
LL.M. (National University of Singapore); Ph.D. (NLSU, Bangalore)

049. PROF. AJAY KUMAR PANDEY
Professor and Executive Director, Clinical Programmes
LL.B. (University of Lucknow); LL.M. (Vanderbilt University, USA);
M.Phil. (Jawaharlaw Nehru University, New Delhi)

050. PROF. SHRUTI PANDEY
Professor of Legal Practice
B.A. (University of Delhi);
LL.B. (University of Delhi); LL.M. (University of London);
PG. Diploma in Human Rights Law (University of London)

051. PROF. (DR.) ARCHIE WILLIAM PARNELL
Professor of Law, Executive Director Centre for Comparative and International Taxation Studies
B.A., J.D. (University of South Carolina);
LL.M. (Georgetown University)

052. PROF. DABIRU SRIDHAR PATNAIK
Professor & Registrar, JGU
B.A. LL.B. (Andhra University); M.Phil. (J.N.U., New Delhi);
PG.D.A. (University of Turin)

053. PROF. (DR.) VESSELIN IVANOV POPOVSKI
Professor & Vice Dean and Executive Director, Centre for the Study of United Nations
M.A. (Including BA) (MSIR); M.Sc. (London School of Economics, London);
Post Graduate Diploma European Law, Ph.D. (King's College London)

054. PROF. (DR.) VENU RAJAMONY
Professor of Diplomatic Practice
LL.B. (Mahatma Gandhi University, Kerala);
M.A. (Jawaharlaw Nehru University, New Delhi)

055. PROF. RASHMI RAMAN
Professor
B.A. LL.B. (Hons.) (WBNUIS, Kolkata);
LL.M. (National University of Singapore); LL.M. (New York University)

056. PROF. PADMANABHA RAMANUJAM
Professor of Law, JGLS and Dean of Academic Governance & Student Life, JGU
B.A. LL.B. (Bangalore University); MBL (NLSIU);
LL.M. (University of East Anglia)

057. PROF. (DR.) SHANKAR RAMASWAMI
Professor
BA (Harvard University); M.A. (University of Chicago);
Ph.D. (University of Chicago)

058. PROF. (DR.) PRABHASH RANJAN
Professor & Vice Dean
B.A.; LL.B. (University of Delhi, LL.M. (University of London)
Ph.D. (King's College London)

059. PROF. ROBERT TIMOTHY READER (BOB READER)
Professor of Practice
B.Sc. (Wichita State University); J.D. (University of Illinois);
LL.M. candidate (Texas A&M College of Law)

060. PROF. (DR.) SAMIPARNA SAMANTA
Professor
B.A. (Presidency College, Kolkata); M.A. (University of Calcutta);
M.A. (Florida State University); Ph.D. (Florida State University)

061. PROF. (DR.) SARBANI SEN
Professor & Executive Director, Centre on Public Law and Jurisprudence
B.A. (Hons.) University of Delhi; LL.B. (University of Delhi);
LL.M. (Yale Law School); J.S.D. (Yale Law School)

062. PROF. MALVIKA SETH
Professor & Associate Dean
B.A. LL.B. (Hons.) (GNLU, Gandhinagar);
LL.M. (New York University)

063. PROF. (DR.) ALBEENA SHAKIL
Professor & Associate Dean
B.A. (Hons.) (University of Delhi); M.A. (Jawaharlaw Nehru University,
New Delhi); Ph.D. (Jawaharlaw Nehru University, New Delhi)

064. PROF. (DR.) CHARU SHARMA
Professor and Vice Dean
B.Sc. (University of Delhi); LL.B. (University of Delhi);
LL.M. (University of Delhi); Ph.D. (Macquarie University, Australia)

065. PROF. (DR.) GAGANPREET SINGH
Professor & Dean, APCI
B.Tech (IIT Roor); MBA (Thapar University, Patiala);
Ph.D. (NITIE, Mumbai)

066. PROF. (DR.) MAHENDRA PAL SINGH
Research Professor of Law, Distinguished Scholar in Public Law & Comparative Law, Director - Centre for Comparative Law and Chairman of the Law School Doctoral Committee
B.A. LL.B. (University of Agra); LL.M. (University of Lucknow);
LL.M. (Columbia Law School); LL.D. (University of Lucknow)

067. PROF. (DR.) MANI SHEKHAR SINGH
Professor & Executive Director, Centre for Law and Humanities
M.A. (University of Delhi); M.Phil. (University of Delhi);
Ph.D. (University of Delhi)

068. PROF. (DR.) MANVEEN SINGH
Professor
B.A.LL.B. (Hons.) (Panjab University);
LL.M. (University College London); Ph.D. (J.P. Jindal Global University)

069. PROF. (DR.) CHETAN SINHA
Professor
B.Sc. (Udaipur Pratap (Autonomous) College);
M.Sc. (Banarus Hindu University, Varanasi);
M.Phil. (J.N.U., New Delhi); Ph.D. (J.N.U., New Delhi)

070. PROF. (DR.) SAMRAT SINHA
Professor
M.A. (Jawaharlaw Nehru University, New Delhi)
M.A. (Delaware University, USA);
Ph.D. (Delaware University, USA)

071. PROF. (DR.) OISHIK SIRCAR
Professor
B.S.L. LL.B. (Pune University); LL.M. (University of Toronto);
Ph.D. (University of Melbourne)

072. PROF. (DR.) S.G. SREEJITH
Professor & Executive Dean, JGLS Dean (Strategy and Institution Building), JGU
LL.B. (University of Kerala); M.B.L. (University of Kerala);
M.Phil. (JNU, Delhi); LL.D. (University of Laganid)

073. PROF. SHAUN JOSEPH STAR
Professor and Associate Dean
LL.B. (Macquarie University); Graduate Diploma in Legal Practice
(Australian National University); B.C.L. (University of Oxford)
Ph.D. (University of Queensland)

074. PROF. (DR.) GITANJALI SURENDRAN
Professor
M.A. (Jawaharlaw Nehru University, New Delhi); M.St. (University of Oxford);
A.M. (Harvard University); Ph.D. (Harvard University)

075. PROF. FAIZ TAJUDDIN
Professor of Practice and Assistant Director, Centre for Global Corporate and Financial Law and Policy
B.A. LL.B. (Hons.) (NLSIU, Bangalore); LL.M. (Columbia University)

076. PROF. (DR.) AGNIPTO TARAFDER
Professor
B.A.LL.B. LL.M. (WBNUIS); LL.M. (Harvard University)

077. PROF. SUNITA TRIPATHY
Professor
B.S.L. LL.B. (Symbiosis Pune); LL.M. (NALSAR, Hyderabad);
LL.M. (Western Ontario); Ph.D. candidate (EUI Italy)

078. PROF. YOGESH KUMAR TYAGI
Professor
LL.M. (Columbia University);
Ph.D. (Jawaharlaw Nehru University, New Delhi)

079. PROF. (DR.) SAUMYA UMA
Professor
B.A. LL.B. (NLSIU, Bangalore); LL.M. (University of Mumbai);
LL.M. University of Nottingham; Ph.D. (NLSIU, Bangalore)

080. PROF. KALYANI UNKULE
Professor
LL.M. (University of Pune); M.A. (University of Delhi); M.A. (University of Leipzig);
M.Sc. (London School of Economics, London) Ph.D. (Indiana University)

081. PROF. (DR.) SHIV VISVANATHAN
Professor and Vice Dean (Institution Building) and Executive Director, Centre for the study of Knowledge Systems
M.A. (University of Delhi);
Ph.D. (University of Delhi)

082. PROF. WENJUAN ZHANG
Professor and Associate Dean
A.A. (Yantai University); B.A. (Shandong University); Juris Master
(Peking Law School); LL.M. (Columbia University); Ph.D. candidate (JGU)

083. LARS AABERG
Associate Professor & Associate Dean
B.A. (University of California); M.Phil. (University of Oslo);
Ph.D. (SOAS University of London)

084. PROF. ADITI
Associate Professor
B.A. LL.B. (Hons.) (WBNUIS, Kolkata);
LL.M. (SOAS University of London)

085. PROF. HIMANSHU AGARWAL
Associate Professor
B.A. LL.B. (Symbiosis Law School);
LL.M. (SOAS, University of London)

086. PROF. DENNIS OGHENROBOR AGELEBE
Associate Professor
LL.B. (University of Calabar, Nigeria);
LL.M. (Charles University, Prague);
Ph.D. (University of Cologne, Germany)

087. PROF. MAZYAR AHMAD
Associate Professor
B.Sc. (Naval Science) (IGNOU, Delhi); LL.B. (University of Delhi);
LL.M. (University of Southampton); M. Phil. (J.N.U., Delhi)

088. PROF. AMAN
Associate Professor of legal practice
B.A. LL.B. (Hons.) (NLU, Jodhpur);
B.C.L. (Dorford University)

089. PROF. (DR.) PINKI ANURAG
Associate Professor
B.A., M.A., M. Phil. (University of Delhi)
LL.M. (University of Mumbai); LL.M. (University of Essex)

090. PROF. (DR.) KAUSHALYA BAIJPAYEE
Associate Professor
B.A. (Hons.) (University of Calcutta); M.A. (University of Calcutta);
M.Phil (Jawaharlaw Nehru University, New Delhi);
Ph.D (Jawaharlaw Nehru University, New Delhi)

091. PROF. SAKSHAT BANSAL
Associate Professor
B.A. LL.B. (CNLU Patna); LL.M. (NLSIU, Bangalore);
Ph.D. candidate (NLSIU, Bangalore)

092. PROF. PRATEEK BHATTARCHARYA
Associate Professor & Associate Director, CPGLS
LL.B. (NLU, Jodhpur);
LL.M. (Saarland University)

093. PROF. CHHAYA BHARDWAJ
Associate Professor
B.A. LL.B. (CCS University, Meerut);
LL.M. (University of Vermont)

094. PROF. HARSH VARDHAN BHATI
Associate Professor
B.A. LL.B. (Hons) (D.P.Jindal Global University);
LL.M. (Lewis & Clark Law School)

095. PROF. RONALD BLUE
Associate Professor
B.A. Indiana University; LL.M. (University of Sussex);
J.D. (Indiana University)

096. PROF. MATTHEW JOHN BYRNE
Associate Professor
LL.B. (University of Canberra);
LL.M. (University of Sydney)

097. MS. ANJALI CHAWLA
Associate Professor & Assistant Dean
B.A. LL.B. (D.P.Jindal Global University)
LL.M. (Stockholm University)

098. PROF. KRITI CHAWLA
Associate Professor
B.Com. (Delhi University)
CA (ICAI); CS (ICSI)
LL.M. (Kings College of London)

099. PROF. KRISHNA DEO SINGH CHAUHAN
Associate Professor
B.A. LL.B. (Hons.) (NLU, Shillong);
LL.M. (National University of Singapore)

- 100 PROF. (DR.) KHUSHBOO CHAUHAN**
Associate Professor & Associate Dean
(Institution Building & OSAI)
B.A. (St. Bede's College, Shimla), B.A.; LL.M. (Himachal Pradesh University); M.Phil.; Ph.D. (Jawaharlar Nehru University, New Delhi)
- 101 PROF. PRAKHAR NARAIN SINGH CHAUHAN**
Associate Professor
LL.B. (Hons.) (University of Lucknow);
LL.M. (Queen Mary University of London)
- 102 MR. SIDHARTH CHAUHAN**
Associate Professor
B.S., LL.B. (Government Law College, Mumbai);
LL.M. (Harvard University)
- 103 PROF. (DR.) VANESSA CHISHTI**
Associate Professor, JGLS and Assistant Director,
International Institute of Higher Education and
Capacity Building
B.A. (University of Delhi); M.A. (J. N. U., New Delhi);
M. Phil. (J. N. U., New Delhi); Ph.D. (J. N. U., New Delhi)
- 104 PROF. (DR.) YONG HWAN CHOUNG**
Associate Professor & Associate Dean
LL.M. (Southern Methodist University);
LL.M. (Indiana University); S.J.D. (Indiana University)
- 105 PROF. WASIQ ABBAS DAR**
Associate Professor
B.S., LL.B. (Pune University); LL.M. (South Asian University)
S.J.D. (Central European University)
- 106 PROF. (DR.) MADHUMITA DAS**
Associate Professor
B.A. (Political Science) (Jadavpur University);
M.A. (Conflict Analysis & Peace Building) (Jamia Millia Islamia);
M.Phil. (J.N.U., New Delhi); Ph.D. (J.N.U., New Delhi)
- 107 PROF. (DR.) AASHITA DAWER**
Associate Professor
B.A. (Hons.) (University of Delhi); M.A. (Jawaharlar Nehru University,
New Delhi); M.Phil. (Jawaharlar Nehru University, New Delhi);
Ph.D. (Jawaharlar Nehru University, New Delhi)
- 108 PROF. DEBLINA DEY**
Associate Professor
B.A. (Calcutta University); M.A. (Jawaharlar Nehru University, New Delhi);
M.Phil. (Jawaharlar Nehru University, New Delhi);
Ph.D. (Jawaharlar Nehru University, New Delhi)
- 109 PROF. DEBOLINA DUTTA**
Associate Professor
B.A. (University of Calcutta); LL.B. (Bharati Vidyapeeth University, Pune);
M.Phil. (Centre for Studies in Social Sciences, Kolkata);
Ph.D. candidate (University of Melbourne)
- 110 PROF. (DR.) SAGNIK DUTTA**
Associate Professor
B.A. (University of Calcutta); M.A. (University of Delhi);
M.A. (SOAS University of London); Ph.D. (University of Cambridge)
- 111 PROF. SHIVANGI GANGWAR**
Associate Professor
B.A., LL.B. (Hons.) (NALSAR, Hyderabad);
LL.M. (Hons.) (University of Chicago)
- 112 PROF. ARJEET GHOSH**
Associate Professor
B.A., LL.B. (Hons.) (GNLU, Gandhinagar);
LL.M. (University College London)
- 113 PROF. SURAJ GIRIJASHANKER**
Associate Professor
LL.B. (London School of Economics, London);
LL.M. (SOAS University of London); LL.M. (Columbia University)
- 114 PROF. (DR.) BISWANATH GUPTA**
Associate Professor
B.A., LL.B. (Hons.) (Tripura University);
LL.M. (WBNLUJS, Kolkata);
Ph.D. (IIT Kharagpur)
- 115 PROF. PALLAVI GUPTA**
Associate Professor
B.Sc. (Hons.), LL.B. (University of Delhi);
LL.M. (Cardiff University); LL.M. (Northeastern University)
- 116 PROF. (DR.) PRIYADARSHINI GUPTA**
Associate Professor
B.A. (University of Calcutta); M.A. (University of Calcutta);
Ph.D. (Ohio University)
- 117 PROF. SUVRAJYOTI GUPTA**
Associate Professor and Assistant Director,
Centre for alternative dispute resolution
LL.M. (WBNLUJS, Kolkata);
LL.M. (National University of Singapore)
- 118 PROF. (DR.) ANJANA HAZARIKA**
Associate Professor & Assistant Director-
Centre for Law and Humanities
B.A. (University of Gauhati); M.A. (J.N.U., New Delhi);
M.Phil. (J.N.U., New Delhi); Ph.D. (Tata Institute of Social Sciences, Mumbai)
- 119 PROF. SHIVARAJ HUCHHANAVAR**
Associate Professor
B.A., LL.B. (RUD University); LL.M. (KSL University);
Ph.D. candidate (Durham University)
- 120 PROF. AISHWARYA IYER**
Associate Professor
B.A. (University of Mumbai); M.A. (Jadavpur University);
M.Phil. (Jadavpur University); M.A. (University of Pennsylvania)
- 121 PROF. (DR.) ANINDITA JAISWAL**
Associate Professor of Legal Practice
B.B.A., LL.B. (NLU, Jodhpur); LL.M. (NLU, Jodhpur);
Ph.D. (University of Edinburgh, UK)
- 122 PROF. FEDERICO JARAST**
Associate Professor
LL.B. (Buenos Aires University);
LL.M. (Tufts University)
- 123 PROF. ISHUPAL SINGH KANG**
Associate Professor
LL.B. (RGUCL, Punjab); LL.M. (International University College of Turin);
LL.M. (University of Kent); Ph.D. candidate (Sciences Po)
- 124 PROF. (DR.) SURBHI KAPUR**
Associate Professor
B.A., LL.B.(H) (GGSIU, Delhi); LL.M. (NALSAR, Hyderabad);
Ph.D. (GGSIU, Delhi)
- 125 PROF. (DR.) MANMEET KAUR**
Associate Professor
B.Com. (Hons.) (University of Delhi); MBA (Amity University);
Ph.D. (FMS, Delhi)
- 126 PROF. (DR.) MOSARRAP HOSSAIN KHAN**
Associate Professor
B.A. (University of Burdwan, West Bengal);
M.A. (University of Hyderabad);
Ph.D. (New York University)
- 127 PROF. (DR.) VINOD K. K.**
Associate Professor
B.A. (University of Calcutta); M.A. (St. Thomas College, Kerala);
M.Phil. (Jawaharlar Nehru University, New Delhi);
Ph.D. (Jawaharlar Nehru University, New Delhi)
- 128 PROF. (DR.) TATIANA JURIEVNA KOCHETKOVA**
Associate Professor
B.A. M.A. Kiev National University, Ukraine);
Ph.D. (Radoud University Nijmegen)
- 129 PROF. (DR.) AVISHEK KONAR**
Associate Professor
B.Sc. (Presidency University); M.S. (Indian Statistical Institute);
M.A. (The Ohio State University); Ph.D. (The Ohio State University)
- 130 PROF. (DR.) PREETHI KRISHNAN**
Associate Professor
B. Tech. (Kerala University);
M.A. (TISS, Mumbai); M.S.; Ph.D. (Purdue University)
- 131 PROF. AAKANKSHA KUMAR**
Associate Professor
B.A., LL.B. (Hons.) (HNLU, Raipur);
LL.M. (National University of Singapore);
Ph.D. Candidate (NLU, Jodhpur)
- 132 PROF. (DR.) GAGAN KUMAR**
Associate Professor
B.A. (University of Delhi); M.A. (University of Delhi);
M.Phil. (Jawaharlar Nehru University, New Delhi);
Ph.D. (Jawaharlar Nehru University, New Delhi)
- 133 PROF. SEVERYNA MAGILL**
Associate Professor
B.A. (Keele University);
M.A. (SOAS University of London)
- 134 PROF. SWATI MALIK**
Associate Professor
B.A. (Kurukshetra University); LL.B. (I.P.Jindal Global University);
J.D. (University of Arizona); LL.M. (University of Arizona)
- 135 PROF. SAPTARSHI MANDAL**
Associate Professor and Editor-Legal and Policy Brief and
Convener – Law and Policy Research Group, JGLS
B.A., LL.B. (Hons.) (WBNLUJS, Kolkata);
LL.M. (Central European University)
- 136 PROF. (DR.) SOURAV MANDAL**
Associate Professor
LL.B. (Jamia Millia Islamia, New Delhi); LL.M. (IL, Delhi);
M.Res. (University of Reading, UK);
Ph.D. (WLSU, Bangalore)
- 137 PROF. TARINI MEHTA**
Associate Professor & Assistant Dean
B.A. (Hons.) (University of Delhi); LL.B. (Hons.) (University of Warwick);
LL.M. (University of Cambridge); S.J.D. (Pace University)
- 138 PROF. ALEKSANDAR MILANOV**
Associate Professor
Master of Law (Sofia University);
Ph.D. candidate (I.P.Jindal Global University)
- 139 PROF. (DR.) SWARNIL DHANRAJ MOON**
Associate Professor
B.A. (North Maharashtra University); M.A. (Tata Institute of Social
Sciences, Mumbai); M. Phil. (Jawaharlar Nehru University, New Delhi);
Ph.D. (Jawaharlar Nehru University, New Delhi)
- 140 PROF. SHIREEN MOTI**
Associate Professor
B.A., LL.B. (I.P.Jindal Global University);
LL.M. (Queen Mary University of London)
- 141 PROF. SAYAN MUKHERJEE**
Associate Professor
B.A., LL.B. (Hons.) (GNLU, Gandhinagar);
B.C.L. (University of Oxford)
- 142 PROF. (DR.) YAGUB NAJAFLI**
Associate Professor and Associate Dean
(International Collaboration-Central Asia)
LL.B. (Baku State University);
LL.M. Candidate (IT, Chicago-Kent College of Law)
- 143 PROF. TANVEE NANDAN**
Associate Professor & Assistant Dean
B.A., LL.B. (Hons.) (NLU, Delhi);
LL.M. (University College London)
- 144 PROF. (DR.) OLAYINKA OLUWAMUYIWA OJO**
Associate Professor
LL.B. (Ekiti State University); LL.M. (Charles University);
Ph.D. (Ghent University)
- 145 PROF. (DR.) AISHWARYA PANDIT**
Associate Professor
B.A. (University of Delhi); Masters in History of International Relations
(London School of Economics, London);
Ph.D. (University of Cambridge)
- 146 PROF. MARY SABINA PETERS**
Associate Professor
LLB (University of Kerala); BA,LL. (University of Kerala)
LL.M. (University of Aberdeen, Scotland);
Ph.D. candidate (Gujarat Maritime University-GNLU)
- 147 PROF. PIERPAOLO PETRELLI**
Associate Professor &
Associate Dean (International Internships)
J.D.; LL.M. (LUIS 'Guido Carli' University);
M.Phil.; S.J.D. candidate (Case Western Reserve University)
- 148 PROF. (DR.) ARCHANA POONIA**
Associate Professor and Joint Proctor
B.Sc.; MBA. (Banasthali Vidyapeeth);
Ph. D. (Delhi University)
- 149 PROF. (DR.) ALOKE N PRABHU**
Associate Professor
LL.B. (Cochin University of Science & Technology);
LL.M. (NLSIU, Bangalore);
M.Phil., Ph.D. (Jawaharlar Nehru University, New Delhi)
- 150 PROF. AMALESH PRASAD**
Associate Professor
B.A. (Hons.); LL.B. (University of Delhi);
LL.M. (Cardiff University)
- 151 PROF. ANDREA MARILYN PRAGASHINI**
Associate Professor
B.A., B.L. (Hons.) (The Tamil Nadu Dr. Ambedkar Law University);
LL.M. (Utrecht University)
- 152 PROF. PIYUSH PRANJAL**
Associate Professor of Practice
B.Tech. (B.P. University of Technology);
MBA (GITAM University); FPM (IIM Ranchi)
- 153 PROF. SATYA PRATEEK**
Associate Professor and Assistant Director, Centre
on Public Law and Jurisprudence
B.A., LL.B. (Hons.) (WBNLUJS, Kolkata);
LL.M. (University of California, Berkeley)

164 PROF. PIERGIUSEPPE PUSCEDDU**Associate Professor**

Law Degree (University of Cagliari); LL.M. (National University of Singapore); LL.M. (New York University); LL.M. candidate (University of Leiden); Ph.D. candidate (University of Tilburg)

165 PROF. SAWMIYA RAJARAM**Associate Professor**

B.A., LL.B. (Mahatma Gandhi University, Meghalaya); M.Phil., Ph.D. candidate (Jawaharal Nehru University, New Delhi)

166 PROF. ABHISHEK RANA**Associate Professor**

B.A. LL.B. (Hons.) (Guru Gobind Singh Indraprastha University, Delhi); LL.M. (Queen Mary University of London)

167 PROF. RUCHIKA RAO**Associate Professor**

B.A. LL.B. (Hons.) (NALSAR, Hyderabad); LL.M. (Laiden University)

168 PROF. (DR.) ROHIT ROY**Associate Professor**

B.S.L.L.B (Symbiosis Informationa Education Centre); LL.M. (Cardiff University); Ph.D (Cardiff University)

169 PROF. SAIKA SABIR**Associate Professor**

B.A. LL.B. (University of Calcutta); LL.M. (WBNLU, Kolkata); M.Res. (University of Reading); Ph.D. candidate (University of Melbourne)

160 PROF. SRINJOY SARKAR**Associate Professor**

B.A. (Hons.) (University of Delhi); LL.B. (Hons.) (Durham University); LL.M. (American University)

161 PROF. (DR.) SAUMYA SAXENA**Associate Professor**

BA (H) (University of Delhi); Msc. (University of Oxford); M.Phil (University of Cambridge); Ph.D. (University of Cambridge)

162 PROF. ROHINI SEN**Associate Professor**

B.Sc. LL.B. (GNLU, Gandhinagar); LL.M. (University of Leeds); Ph.D. candidate (Warwick University)

163 PROF. KANISHKA SEWAK**Associate Professor**

B.A. LL.B. (Hons.) (RGUCL, Punjab); LL.M. (University of Turin)

164 PROF. AJITA SHARMA**Associate Professor**

LL.B. (Hons.) (O.P.Jindal Global University); LL.M. (University of Illinois)

165 PROF. AMRITA SHARMA**Associate Professor**

B.A. (Hons.) (University of Delhi); M.A. (University of Delhi); M.Phil.; Ph.D. candidate (Jawaharal Nehru University, New Delhi)

166 PROF. APOORVA SHARMA**Associate Professor**

B.A. LL.B. (Hons.) (NLU, Delhi); LL.M. (London School of Economics, London)

167 PROF. ISHITA SHARMA**Associate Professor**

B.A. LL.B. (Hons.) (NLU, Bhopal); LL.M. (London School of Economics, London)

168 PROF. ANSHUMAN SHUKLA**Associate Professor**

B.Sc. (Hons.) (University of Delhi); LL.B. (University of Delhi); LL.M. (NALSAR, Hyderabad); LL.M. (University of Cambridge)

169 PROF. (DR.) GUNJAN SINGH**Associate Professor**

B.A. (University of Delhi); M.A. (Hyderabad University); M.Phil (Jawaharal Nehru University, New Delhi); Ph.D. (Jawaharal Nehru University, New Delhi)

170 PROF. KUMAR PARAMJEET SINGH**Associate Professor & Associate Dean and Associate Director, Centre for Post Graduation Legal Studies**

B.S.; LL.B. (Symbiosis, Pune); LL.M. (Universidade de Rouen e Católica Portuguesa)

171 PROF. RAKESH SINGH**Associate Professor**

LL.B (GNLU, Patna); LL.M. (Tata Institute of Social Science, Mumbai); LL.M. (Queen Mary University of London)

172 PROF. RAV PRATAP SINGH**Associate Professor**

LL.B (Hons.) (Panjab University); LL.M. (NLSIU, Bangalore); LL.M. (University of Cambridge)

173 PROF. (DR.) MAX STEUER**Associate Professor**

B.A., LL.B. (Comenius University, Slovakia); M.A. (Central European University); LL.M. (University of Cambridge); Ph.D. (Comenius University, Slovakia)

174 PROF. (DR.) AISHWARYA SUBRAMANIAN**Associate Professor**

B.A. (Hons.) (University of Delhi); M.Phil. (University of Dublin, Ireland); Ph.D. (Newcastle University, UK)

175 PROF. VIDYA LAKSHMI SUBRAMANIAN**Associate Professor & Associate Dean**

B.Sc., M.Sc. (University of Delhi)
M.Phil.; Ph.D. (Jawaharal Nehru University, New Delhi); Post Doc. (IIT Bombay); (Harvard University)*

176 PROF. ADYA SABABHI**Associate Professor**

LL.B. (Hons.) (CNLU, Patna); LL.M. (University of Reading)

177 PROF. SANDEEP SURESH**Assistant Professor & Assistant Dean**

B.A. LL.B. (Hons.) (NLU, Jodhpur); LL.M. (Central European University)

178 PROF. (DR.) HAKEEM TAHIRU**Associate Professor, Centre for Post Graduate Legal Studies**

B.A. (University of Ghana); LL.M. (University of Dundee); Ph.D. (University of Aberdeen)

179 PROF. AAKRITI TRIPATHI**Associate Professor & Assistant Dean**

B.A. LL.B. (Hons.) (CNLU, Patna); LL.M. (University of Cambridge)

180 PROF. ISHANA TRIPATHI**Associate Professor**

B.A. LL.B. (Hons.) (NALSAR, Hyderabad); LL.M. (University of Hamburg and Erasmus University, Rotterdam)

181 PROF. (DR.) MOIZ TUNDAWALA**Associate Professor**

B.A. LL.B. (Hons.) (WBNLU, Kolkata); LL.M. (University of London); Ph.D. (London School of Economics, London)

182 PROF. (DR.) CHISOM LOTANNA UBABUKOH**Associate Professor**

B.Tech. (Federal University of Technology, Nigeria); M.Sc., Ph.D. (University of Manchester)

183 PROF. AMIT UPADHYAY**Associate Professor**

B.A. LL.B. (Hons.) (Guru Gobind Singh Indraprastha University, Delhi); MBL (Freie Universitat, Berlin)

184 PROF. SAKSHI VIJAY**Associate Professor**

LL.B. (ILS Patna); C.S. (ICS); LL.M. (University of Melbourne)

185 PROF. NIKOLAOS K. VOUTYRAKOS**Associate Professor**

LL.B. (National and Kapodistrian University of Athens); LL.M. (National and Kapodistrian University of Athens); LL.M. (University of Cambridge)

186 PROF. THIBAUT G. E. WEIGELT**Associate Professor**

Bachelors in European and French Law (University of Strasbourg); LL.M. (University of Strasbourg, University of Basel & University of Freiburg)

187 PROF. MICHAEL LOORDHU VALAN A**Assistant Professor**

B.Sc. (Loyola College, Chennai); MA (University of Madras); Ph.D (University of Madras)

188 PROF. SABIKA ABBAS**Clinical Assistant Professor of Law**

B.A. (University of Delhi); M.A. (TISS Mumbai)

189 PROF. SHAMA BANOO HUSSAIN ABBASI**Assistant Professor & Assistant Director, Mahatma Gandhi Centre for Peace Studies, JGU**

B.A. LL.B. (Hons.) (O.P. Jindal Global University); B.C.L. (University of Oxford)

190 PROF. (DR.) ARPAN ACHARYA**Assistant Professor**

BALLB (Symbiosis Law School, Pune); LL.M (NLU, Odisha); M.Phil (JNU); Ph.D (JNU)

191 PROF. SUPRITA ACHARYA**Assistant Professor**

B.A. LL.B. (KIT University); LL.M. (University of Maryland)

192 PROF. PANKHURI AGARWAL**Assistant Professor of Legal Practice**

B.A. LL.B. (WBNLU, Kolkata); LL.M. (National University of Singapore)

193 PROF. (DR.) SHAMBHAVI AGRAWAL**Assistant Professor**

B.Tech (SRM's College of Engineering & Technology); Ph.D. (IIM, Kozhikode)

194 PROF. SABREEN AHMED**Assistant Professor**

BBA LL.B. (IPES, Otrahrud); LL.M. (University College London)

195 PROF. RAMANATHAN ANJANA**Assistant Professor & Assistant Dean**

B.A. LL.B. (Hons.) (DSNLU, Visakhapatnam); LL.M. (Laiden University)

196 PROF. AKMAL HANDI ANSARI**Assistant Professor of Legal Practice**

LL.B. LL.M. (Universitas Sumatera Utara); LL.M. (Queen Mary University of London)

197 PROF. MUKESH ARORA**Assistant Professor & Assistant Dean**

B.A. LL.B. (North Cap University); LL.M. (Queen Mary University of London)

198 PROF. RAJA BAGGA**Assistant Professor**

B.A.; LL.B. (University of Delhi); M.Sc. (London School of Economics)

199 PROF. ARUSHI BAJPAI**Assistant Professor**

B.A. LL.B. (Hons.) (JUSRI, Ranchi); LL.M. (University of Kent)

200 PROF. GITANJALI BALKRISHNA**Assistant Professor**

B.A. LL.B. (Hons.) (WUJS, Kolkata); LL.M (University of Melbourne)

201 PROF. ISHA BANSAL**Assistant Professor**

B.A. LL.B. (Hons.) (RMLNL, Lucknow); LL.M. (Queen Mary University of London)

202 PROF. KABERI BASU**Assistant Professor**

B.Sc. (Hons.) (University of Delhi); LL.B. (Hons.) (Banaras Hindu University, Varanasi); LL.M. (University of California, Berkeley)

203 PROF. OISWARJYA BASU**Assistant Professor**

B.A. LL.B. (University of Calcutta); LL.M. (SOAS University of London)

204 PROF. SRUJANA BEJ**Assistant Professor**

B.A. LL.B. (NALSAR University of Law, Hyderabad); LL.M. (Harvard)

205 PROF. YASHMITA BHALLA**Assistant Professor**

B.A. LL.B. (Hons.) (Panjab University); LL.M (Pepperdine University)

206 PROF. SPRHA BHANDARI**Assistant Professor of Legal Practice**

B.A., LL.B. (Hons.) (GGSIPU, Delhi); LL.M. (Cornell University, USA)

207 PROF. SURABHI BHANDARI**Assistant Professor**

LL.B (Hons.) (Cardiff University); MA (BPP Law School, London); LL.M. (O.P. Jindal Global University);

209. PROF. DALIA BHATTACHARJEE
Assistant Professor
B.A. (Cotton College, Gauhati University); M.A. (IT Guwahati);
Ph.D. (ISER, Mohali); Fulbright-Nehru Post-Doctoral Fellow
(University of North Carolina)

209. PROF. ANURAG BHASKAR
Assistant Professor
B.A. LL.B. (Hons.) (RMLNLU, Lucknow)
LL.M. (Harvard University)

210. PROF. TRIPTI BHUSHAN
Assistant Professor
B.A. LL.B. (Hons.) (Amity University);
LL.M. (HRLU, Raipur)

211. PROF. SIMRAN BHINDER
Assistant Professor & Assistant Dean
LL.B. (O.P. Jindal Global University);
LL.M. (University of Melbourne)

212. PROF. MANIKA BORA
Assistant Professor
B.A. (University of Delhi); M.A., M.Phil. (J.N.U., New Delhi);
Ph.D. candidate (NIEPA, New Delhi)

213. PROF. ANIMESH ANAND BORDOLOI
Assistant Professor & Assistant Dean
B.A. LL.B. (Hons.) (NLUJA, Assam);
LL.M. (National University of Singapore)

214. PROF. DR. J. DHIREN BORISA
Assistant Professor
B.A., B.Ed. (Mohantali Sukhadia University);
M.A., M.Phil., Ph.D. (J.N.U., New Delhi);

215. PROF. DR. J. ARNAB BOSE
Assistant Professor
B.A. (University of Delhi); M.A. (Jawaharlal Nehru University, New Delhi);
MBA (Amsterdam Business School); Ph.D. (O.P. Jindal Global University)

216. PROF. VAIBHAV CHADHA
Assistant Professor
B.Com. (University of Delhi);
LL.B. (University of Delhi);
LL.M. (Queen Mary University of London)

217. PROF. DR. J. AVEEK CHAKRAVARTY
Assistant Professor
B.A. LL.B. (NLU, Bhopal);
LL.M. (University of Turin and the International Training Centre of
the ILO, Italy); Ph.D. Candidate (University of Turin, Italy)

218. PROF. SUBHRAJIT CHANDA
Assistant Professor
BBA LL.B. (Hons.) (Amity University, Rajasthan);
LL.M. (JPES, Dehradun); LL.M. (Nottingham Trent University, UK);
Ph.D. Candidate (G.D. Goenka University)

219. PROF. CHETNA CHANDEL
Assistant Professor
B.A. LL.B. (Guru Gobind Singh Indraprastha University, Delhi);
LL.M. (Punjab State University)

220. MS. AVAANTIKA CHAWLA
Assistant Professor
B.A. LL.B. (O.P. Jindal Global University)
LL.M. (Leden University)

221. PROF. SOUMYA SINGH CHAUHAN
Assistant Professor
B.A. LL.B. (Panjab University); LL.M. (University of Washington);
Ph.D. candidate (O.P. Jindal Global University)

222. MR. ASHVI CHOUHARY
Assistant Professor
B.A. LL.B. (University of Jammu)
LL.M. (Queen Mary University of London)

223. PROF. SAVITA DAHIYA
Assistant Professor
B.Sc. (Maharshi Dayanand University, Rohtak);
M.B.A. (Maharshi Dayanand University, Rohtak);
Ph.D. candidate (IT Roorkee)

224. PROF. UPASANA DASGUPTA
Assistant Professor & Assistant Dean
B.A.; LL.B. (Hons.) (RMLNLU, Lucknow)
LL.M., DCL (McGill University)

225. PROF. ANEESHAA DEV
Assistant Professor
B.B.A. LL.B. (Symbiosis International University);
LL.M. (University of Southern California); MBA (Westcliff University)

226. PROF. ANMOL DIWAN
Assistant Professor
B.A. LL.B. (Guru Gobind Singh Indraprastha University);
LL.M. (USG School of Law)

227. PROF. SANTWANA ODWEDY
Assistant Professor
B.A. LL.B. (Hons.) (NLU, Odisha);
LL.M. (Central European University)

228. PROF. ANEELA FATIMA
Assistant Professor & Assistant Dean
B.B.A. LL.B. (Hons.) (Amity University);
LL.M. (Queen Mary University of London)

229. PROF. VARSHA GAIKWAD
Assistant Professor
B.L.S. LL.B. (Government Law College, Mumbai);
LL.M. (Tata Institute of Social Sciences, Mumbai);
LL.M. (Queen Mary University of London)

230. PROF. ADITYA GANDOTRA
Assistant Professor
B.A. LL.B. (University of Jammu);
LL.M. (Queen Mary University of London)

231. PROF. SARA ACEVEDO GARZON
Assistant Professor
J.D. (UNIVERSIDAD ICESI – Cali, Colombia);
LL.M. (Penn State Law)

232. PROF. APARNA BABU GEORGE
Assistant Professor & Assistant Dean
B.A. LL.B. (NUALS, Kerala)
LL.M. (University of Cambridge)

233. PROF. ISABEL LINDO GUIDOTE
Assistant Professor
B.S. (Ateneo de Manila University, Philippines); J.D. (University of the
Philippines); M.A. (King's College London);
LL.M. (Harvard Law School, Cambridge)

234. PROF. AKASH GUPTA
Assistant Professor
B.A. LL.B. (Hons.) (TNLU, Tiruchirappalli);
LL.M. (Stockholm University, Sweden)

235. PROF. DR. J. DIVYA GUPTA
Assistant Professor & Assistant Dean
B.A. (Hons.), M.A., Ph.D. (University of Delhi)

236. PROF. PRASHANT GUPTA
Assistant Professor
B.Tech (Punjab Engineering College); M.A. (Punjab University);
M.Phil. (University of Delhi); Ph.D. candidate (J.N.U., New Delhi)

237. PROF. SWASTI GUPTA
Assistant Professor & Assistant Dean
B.A. LL.B. (Hons.) (O.P. Jindal Global University)
LL.M. (University of Hamburg and Erasmus University, Rotterdam)

238. PROF. SANDRINE DE HERDT
Assistant Professor
LL.B. (Saint Louis University, Belgium);
LL.M. (Catholic University of Louvain, Belgium);

239. PROF. ASADULLA IQBAL
Assistant Professor
BA LLB(Hons) (AMU); LL.M. (University of Saarland);
Ph.D-Pursuing (O.P. Jindal Global University)

240. PROF. SHACHI JAIN
Assistant Professor & Assistant Director &
Assistant Dean
LL.B. (Government Law College, Mumbai);
C.S. (ICSI); LL.M. (National University of Singapore)

241. PROF. DR. J. SARNI JAIN
Assistant Professor
B.A.; M.A. (University of Jammu);
Ph.D. (O.P. Jindal Global University)

242. PROF. RAUNAQ JAISWAL
Assistant Professor
B.A. LL.B. (Bharati Vidyapeeth University, Pune);
LL.M. (O.P. Jindal Global University); LL.M. (Central European University)

243. PROF. DR. J. NEHA JAISWAL
Assistant Professor
B.Sc. (Bidyasagar University); M.Sc. (Bidyasagar University);
Ph.D. (IT, Kharagpur)

244. PROF. KANIKA JAMWAL
Assistant Professor
B.A. LL.B. (Hons.) (RGNUL, Punjab);
LL.M. (London School of Economics, London)

245. PROF. RAUSHAN TARA JASWAL
Assistant Professor
B.A. LL.B. (Hons.) (Guru Gobind Singh Indraprastha University, Delhi);
LL.M. (University of Cambridge)

246. PROF. SHILPA SINGH JASWANT
Assistant Professor
B.Sc. LL.B. (Hons.) (GNLU, Gandhinagar)
LL.M. (Europa Kolleg-University of Hamburg)

247. PROF. SANA JAVED
Assistant Professor
B.S.; LL.B. (Pune University);
LL.M. (Queen Mary University of London)

248. PROF. DIKSHA JINGAN
Assistant Professor
B.A. LL.B. (O.P. Jindal Global University); LL.M. (California);
MBA - DBA candidate (Westcliff University)

248. PROF. PRAJAKTA KALE
Assistant Professor
B.E. (Dr. Baba Ambedkar Marathwada University);
LL.B. (Dr. Baba Ambedkar Marathwada University);
LL.M. (Queen Mary University of London)

250. PROF. SANITYA KALIKA
Assistant Professor
B.A. LL.B. (Tribhuvan University);
LL.M. (University of Michigan)

251. PROF. SHIVANI SAGAR KALRA
Assistant Professor
B.Com.; LL.B. (University of Delhi University);
LL.M. (Stanford University)

MR. SHANTANU KANADE
Assistant Professor
B.A. LL.B. (HNU, Raipur);
M.A. (O.P. Jindal Global University); LL.M. (Leden University)

253. PROF. MALCOLM KATRAK
Assistant Professor
B.L.S. LL.B. (University of Mumbai);
LL.M. (Erasmus University, Rotterdam; University of Hamburg);
M.Sc. (IGDR, Mumbai)

254. PROF. BHAVNEET KAUR
Assistant Professor
B.A. (University of Delhi);
M.A. (Tata Institute of Social Sciences, Mumbai);
M.Phil., Ph.D. candidate (University of Delhi)

255. PROF. PANKHUDI KHADELWAL
Assistant Professor
B.A. LL.B. (Hons.) (NLU, Bhopal);
LL.M. (London School of Economics, London)

256. PROF. SHARMIN KHODAJI
Assistant Professor
B.A. (University of Delhi);
M.A. (Jawaharlal Nehru University, New Delhi);
M.Phil., Ph.D. candidate (Jawaharlal Nehru University, New Delhi)

257. PROF. KIRTHANA SINGH KHURANA
Assistant Professor & Assistant Dean
B.Com. (Hons.); LL.B. (University of Delhi);
M.C.L. (University of Cambridge)

258. PROF. SANYA DARAKSHAN KISHWAR
Assistant Professor
B.Sc.; LL.B. (Hons.) (Central University of South Bihar);
LL.M. (Penn State Law); LL.M. (University of Leeds)

259. PROF. ADITI KRISHNA
Assistant Professor
B.A. (University of Delhi); MA. (South Asian University);
Ph.D. (University of London)

260. PROF. SOMIL KUMAR
Assistant Professor
B.A. LL.B. (Hons.) (NLU, Delhi); LL.M. Ph.D. candidate
(Graduate Institute of International and Development Studies, Geneva)

261. PROF. SWETA LAKHANI
Assistant Professor
B.Com. LL.B. (Hons.) (Virma University)
LL.M. (O.P. Jindal Global University)

262 PROF. KAVYA LALGHANDANI

Assistant Professor
BBA LL.B. (NLI, Odisha);
MCL (University of Cambridge)

263 PROF. JADUMANI MAHANAND

Assistant Professor
M.A. (University of Hyderabad);
M.Phil. (University of Hyderabad);
Ph.D. candidate (Jawaharlal Nehru University, New Delhi)

264 PROF. HARSH MAHASETH

Assistant Professor & Assistant Dean
B.A. LL.B. (NALSAR, Hyderabad);
LL.M. (National University of Singapore)

265 PROF. DHWANI NEERAV MAINKAR

Assistant Professor
B.L.S. LL.B. (University of Mumbai);
LL.M. (Queen Mary University of London)

266 PROF. DEVINA MALAVIYA

Assistant Professor of Legal Practice & Assistant Dean
BA LLB (Hons.) (NLI, Delhi)
LL. M. (University of Cambridge);

267 PROF. AAKRITI MALHOTRA

Assistant Professor & Assistant Dean
B.A. (University of Delhi);
LL.B. (University of Delhi);
LL.M. (Londen University)

268 PROF. KONINA MANDAL

Assistant Professor
B.A. LL.B. (KIT University, Bhubaneswar);
LL.M. (University College London)

269 PROF. HAMSINI MARADA

Assistant Professor
LL.B. (ILS Pune);
LL.M. (University of Cambridge)

270 PROF. ABHINAV MEHROTRA

Assistant Professor
LL.B. (O.P.J.S India Global University)
LL.M. (University of Leeds)

271 PROF. YOGESH MISHRA

Assistant Professor
B.Tech. (Edexcel, UK); B.IT (IGNOU, New Delhi)
M.A. (IT Guwahati); Ph.D. (ISER, Mohali)

272 PROF. VARSHA MOHAN

Assistant Professor
B.S.A. LL.B. (Christ University, Bangalore);
LL.M. (Til Awli University)

273 PROF. GAUTAM MOHANTY

Assistant Professor
B.S.A. LL.B. (Hons.) (NLI, Odisha)
LL.M. (Central European University)

274 PROF. RAHUL MOHANTY

Assistant Professor
BA LLB(Hons.) (NALSAR University of Law);
BCL (University of Oxford);
Ph.D.-Pursuing (NALSAR University of Law, Hyderabad)

275 PROF. (DR.) RUCHI MOOLCHANDANI

Assistant Professor
B.Com (University of Delhi); M.Com (University of Delhi);
Ph.D. (IIT, Roorkee)

276 PROF. DEVYANI MOURYA

Assistant Professor
B.Sc. (Hokar Science College, Indore);
MHRW (Mahatma Subhadra University);
FPM candidate (IM Indore)

277 PROF. MEGHMALA MUKHERJEE

Assistant Professor of Legal Practice
B.B.A., LL.B. (National Law University, Orissa);
BCL (University of Oxford)

278 PROF. SNEHA MUKHERJEE

Clinical Assistant Professor of Law
M.A-Gender Studies (SOAS, London);
B.B.A. LL. B (KIT University)

279 PROF. PRAMA MUKHOPADHYAY

Assistant Professor
B.A. LL.B. (KIT University, Bhubaneswar);
LL.M. (King's College London)

280 PROF. SOURADEEP MUKHOPADHYAY

Assistant Professor & Assistant Dean (Research & Innovation)
B.A.L.L.B. (Rajiv Gandhi National University of Law);
LL.M. (Harvard Law School)

281 PROF. NALAMALA CHANDRA BHANU MURTHY

Assistant Professor
M.A., M.Phil. (University of Hyderabad);
Ph.D. candidate (University of Göttingen, Germany)

282 PROF. RUBANYA NANDA

Assistant Professor
LL.B. (Hons.) (DSNLI, Vackhabhatnam);
LL.M. (Uppsala University, Sweden)

283 PROF. NIKHIL NAREN

Assistant Professor
B.A. LL.B. (Symbiosis, Pune);
LL.M. (Queen Mary University of London)

284 PROF. NAKUL NAYAK

Assistant Professor
B.A. LL.B. (Hons.) (NLI, Jodhpur);
LL.M. (University of Pennsylvania)

285 PROF. ANNY GABRIELA MOLINA OCHOA

Assistant Professor
LL.B. (National Autonomous University of Honduras);
LL.M. (Penn State Law)

286 PROF. AISHWARYA PAGEDAR

Assistant Professor
LL.B. (Savitribai Phule Pune University);
LL.M. (Northeastern University, Boston)

287 PROF. RUBY PANCHAL

Assistant Professor
B. A. LL.B. (Hons.) (RGNUL, Punjab);
LL.M. (Queen Mary University of London)

288 PROF. RAPHAEL LORENZO AGUILIN PANGALANGAN

Assistant Professor & Associate Dean
B.A., J.D. (University of the Philippines); M.S. (University of Oxford);
LL.M. (University of Cambridge)

289 PROF (DR.) TRUPTI PANIGRAHI

Assistant Professor & Assistant Dean
B.A. LL.B. (Hons.) (Guru Gobind Singh Indraprastha University, Delhi);
LL.M. (Queen Mary University of London)

290 PROF. GAURAV PATHAK

Assistant Professor
LLB (National Law University, Lucknow)
LL.M.(Leibniz University, Germany);

291 PROF. RASHMI PATOWARY

Assistant Professor & Assistant Dean
LL.B. (NLIJA Jessam);
LL.M. (King's College London);
Ph.D. candidate (O.P.Jindal Global University)

292 PROF. HAIFA PEERZADA

Assistant Professor
B.A. (Hons.), LL.B. (University of Delhi);
M.A. (University of Birmingham, UK);
Ph.D. candidate (O.P.Jindal Global University)

293 PROF. SHERIN SARAH PHILIP

Assistant Professor & Assistant Dean
B.A. LL.B. (Indore Institute of Law, Indore);
LL.M. (University College Dublin, Ireland)

294 PROF. POOJA

Assistant Professor
BA (Hons.), LL.B. (University of Delhi);
LL.M. (National University of Singapore)

295 PROF. SHRADHA PRASAD

Assistant Professor & Assistant Dean
BBA, LL.B. (Hons.) (KIT University, Bhubaneswar);
LL.M. (Queen Mary University of London)

296 PROF. MANYA PUNDHIR

Assistant Professor & Assistant Dean
B.B.A. LL.B. (Hons.) (Christ University, Bangalore);
LL.M. (Queen Mary University of London) (2017)

297 PROF. TANESSA PURI

Assistant Professor & Assistant Dean
B.A.LL.B. (JGU);
LL.M. (New York University School of Law, United States)

298 PROF. EKA NUGRAHA PUTRA

Assistant Professor
LL.B. (University of Brajwajaya Malang, Indonesia);
LL.M. (University of Indonesia); S.J.D. candidate (Indiana University)

299 PROF. PEERZADA RAOUF AHMAD SHAH RAFFEOI

Assistant Professor
B.A. (Alighh Muslim University); M.A. (JNU, New Delhi);
Ph.D. candidate (University of Delhi)

300 PROF. HARSHIT RAI

Assistant Professor
B.A. LL.B. (Symbiosis, Pune);
LL.M. (University of Warwick)

301 PROF. KANISHK RAI

Assistant Professor & Assistant Dean
B.A. LL.B. (Bharati Vidyapeeth University, Pune);
LL.M. (King's College London)

302 PROF. PHIL. M. RAJU

Assistant Professor
B.B.A. LL.B. (Hons.) (Christ University);
LL.M. (Queen Mary University of London)

303 PROF. ESHA RANA

Assistant Professor & Assistant Dean
B.A. LL.B. (Hons.) (O.P.Jindal Global University)
LL.M. (SOAS University of London)

304 PROF. ADITYA RAGHU RAYEE

Assistant Professor
B.B.A. LL.B. (Bharati Vidyapeeth University, Pune);
LL.M. (Queen Mary University of London)

305 PROF. MANSI RATHOUR

Assistant Professor
B.A. (University of Delhi);
M.A. (Kurukshetra University);
M.A. (Londen University)

306 PROF. (DR.) RITABRATA ROY

Assistant Professor
B.A. LL.B. (KIT Law School, Bhubaneswar); LL.M. (GW, US);
M.A. (University of Manchester, London);
Ph.D. (University of Sussex, Law School, London)

307 PROF. DIESHI SAHA

Assistant Professor
B.A. LL.B. (Hons.) (WBNULS, Kolkata);
LL.M. (University of Cambridge)

308 PROF. DIKSHA D SANYAL

Assistant Professor of Legal Practice
B.A. LL.B. (Hons.) (WBNULS, Kolkata);
LL.M. (SOAS University of London)

309 PROF. ARUNIMA SARAF

Assistant Professor
B.A. LL.B. (Hons.) (O.P.Jindal Global University);
LL.M. (O.P.Jindal Global University)

310 PROF. JOHN SEBASTIAN

Assistant Professor
B.A. LL.B. (Hons.) (NLI, Delhi);
B.C.L. (University of Oxford)

311 PROF. TOOBA SHAHZAD

Assistant Professor & Assistant Dean (Academic Affairs)
B.A. LL.B. (Jamia Millia Islamia, New Delhi);
LL.M. (University of Cambridge)

312 PROF. RAABIA ABUZER SHAMS

Assistant Professor & Assistant Dean
B.A. LL.B. (Hons.) (NLI, Patna);
LL.M. (University of Essex)

313 PROF. MALIKA GALIB SHAH

Assistant Professor & Assistant Dean
LL.B. (University of Kashmir);
LL.M. (University College London)

314 PROF. KRITI SHARMA

Assistant Professor
B.A. LL.B. (NALSAR, Hyderabad);
J.S.M. (Stanford University)

315 PROF. NIDHI SHARMA

Assistant Professor
B.A. LL.B. (Hons.) (Guru Gobind Singh Indraprastha University, New Delhi);
LL.M. (NLI, Shree)

316 PROF. DR.J NIYATI SHARMA**Assistant Professor**

B.A. (Hons.), M.A., M.Phil. (University of Delhi);
D.Phil. (University of Oxford)

317 PROF. SHELJA**Assistant Professor**

B.Tech. (Kurukshetra University); M.Tech. (DCRUST, Sonapat);
LL.M. (Kurukshetra University)

318 MS. SHAMBHAVI SHIVANI**Assistant Professor & Assistant Dean**

B.A.A. LL.B. (Hons.) (CNLU, Patna);
LL.M. (Trinity College Dublin)

319 MR. NIKUNJ KULSHRESHTHA**Assistant Professor**

BBA (M S University, Tirunelveli, Tamil Nadu);
LL.B. (Faculty of Law, University of Delhi);
LL.M. (Queen Mary University of London)

320 PROF. SHUBHANGI**Assistant Professor**

B.A. LL.B. (Hons) (GNLU, Gandhinagar); LL.M. (University of Chicago);
Ph.D. candidate (University of Munster, Germany)

321 MR. SAKSHAM SHUKLA**Assistant Professor**

B.A LL.B. (Hons.) (Amity University);
LL.M. (University of Bristol)

322 PROF. NIZAMUDDIN AHMAD SIDDIQUI**Assistant Professor**

B.A LL.B (Hons.) (Aligarh Muslim University);
LL.M (South Asian University); Ph.D. (O.P.Jindal Global University)

323 PROF. ADITI SINGH**Assistant Professor & Assistant Dean**

B.Tech (YMCA); LL.B. (University of Delhi);
LL.M (London School of Economics, London)

324 PROF. ABHIMANYU SINGH**Assistant Professor & Assistant Dean**

B.A LL.B. (Hons) (NUSRL, Ranchi);
LL.M. (The Australian National University)

325 MS. ASMITA SINGH**Assistant Professor & Assistant Dean**

B.A LL.B. (Hons) (O.P.Jindal Global University)
LL.M. (Humboldt University of Berlin)

326 PROF. BHAVINEE SINGH**Assistant Professor & Assistant Dean**

B.A LL.B. (Nirma University);
LL.M. (Emory University School of Law, Atlanta, USA)

327 PROF. KRITTIKA SINGH**Assistant Professor**

B.Com LL.B. (Hons) (IGNLU, Gandhinagar);
MALD (Tufts University)

328 PROF. MEDHAVI SINGH**Assistant Professor & Assistant Dean**

L.L.B. (University of Delhi);
LL.M. (Pennsylvania State University)

329 PROF. NISHTHA SINGH**Assistant Professor**

B.A. LL.B. (Army Institute of Law, Punjab);
LL.M., Ph.D. candidate (NALSAR, Hyderabad)

330 PROF. SWATI SINGH**Assistant Professor of Legal Practice**

B.A. LL.B. (NALSAR), Hyderabad;
LL.M. (University of Cambridge)

331 PROF. SANTIAGO WEIL SILVA**Assistant Professor**

LL.B. (Universitat ICES);
LL.M. (The Pennsylvania State University)

332 PROF. ATHARVA SONTAKKE**Assistant Professor & Assistant Dean**

B.Sc. LL.B. (Hons.) (GNLU, Gandhinagar);
LL.M. (London School of Economics, London)

333 PROF. (DR.) SAURABH SOOD**Assistant Professor**

B.A. LL.B. (Himachal Pradesh University)
LL.M. (Nalair University of Law)
Ph.D. (National Law School of India University, Bangalore)

334 PROF. LAKSHMI SRINIVASAN**Assistant Professor & Assistant Proctor**

B.A LL.B. (Hons.) (NMIMS, Mumbai);
LL.M. (King's College, London)

335 PROF. SAKSHI SRIVASTAVA**Assistant Professor and Assistant Dean, Career Development**

B.A LL.B. (NLU, Jodhpur); LL.M. (Columbia University)

336 PROF. SMARNIKA SRIVASTAVA**Assistant Professor**

B.A LL.B. (Hons.) (O.P.Jindal Global University);
LL.M. (King's College, London)

337 MR. DANIEL H STEIN**Assistant Professor**

B.S. (State University of New York, Buffalo)
J.D. (Tuane University)

338 PROF. DR.J PRERNA SUBRAMANIAN**Assistant Professor**

B.A. (University of Delhi);
M.A. (IIT, Gandhinagar); Ph.D. (Queen's University)

339 PROF. ABHISEK SUR**Assistant Professor**

B.Sc. (Hons.), M.Sc. (University of Calcutta);
MBA (ICFAI Business School, Kolkata);
FPM (IIM Ranchi)

340 PROF. PRAGGYA SURANA**Assistant Professor**

B.A. LL.B. (NLSIU, Bangalore);
LL.M. (Harvard University)

341 PROF. MAYANK SURI**Assistant Professor**

B.A LL.B. (O.P.Jindal Global University);
LL.M. (Swansea University, UK)

342 MR. AVANTIK TAMTA**Assistant Professor**

B.A LL.B. (Hons.) (WBUJUS, Kolkata);
LL.M. (University of Cambridge)

343 PROF. SRISHTI TELANG**Assistant Professor**

B.A LL.B. (Hons.) (DSNLU, Visakhapatnam);
LL.M. (Maastricht University, Netherlands)

344 PROF. DEVYANI TEWARI**Assistant Professor of Legal Practice**

LL.B. (Hons.) (NALSAR, Hyderabad); LL.M. (L.S.E., London);
Ph.D. candidate (University of Victoria, Canada)

345 PROF. (DR.) ANJANA THAMPI**Assistant Professor**

B.A. (Hons.) (University of Delhi); M.A. (Hyderabad University);
M.Phil (Jawaharlal Nehru University, New Delhi);
Ph.D. (Jawaharlal Nehru University, New Delhi)

346 PROF. FELIPE GUIMARAES ASSIS TIRADO**Assistant Professor**

LL.B.; M. Phil. (Federal University of Minas Gerais);
LL.M., Ph.D., (Kings College London)

347 PROF. ILA TYAGI**Assistant Professor of Legal Practice**

BA (Hons.) (Delhi University); LLB (Hons.) (University of Nottingham);
LL.M (University College, London)

348 PROF. JUAN VALLEJO**Assistant Professor & Assistant Dean (International Internships)**

B.A LL.B. (NALSAR, Hyderabad);
J.S.M. (Stanford University)

349 PROF. AYUSHI VASHIST**Assistant Professor**

B.A LL.B. (Army Institute of Law, Mohali);
LL.M. (Erasmus University, Rotterdam; University of Hamburg)

350 PROF. BAGAVATHY VENNIMALAI**Assistant Professor and Assistant Editor (Jindal Global Law Review)**

B.Com LL.B. (The Tamil Nadu Dr Ambedkar Law University)
LL.M. (University of Cambridge)

351 PROF. VINITIKA VIJ**Assistant Professor**

B.A LL.B. (Hons.) (O.P.Jindal Global University);
LL.M. (University of Cambridge)

362 PROF. ALEKSEI VORONA**Assistant Professor**

LL.B., LL.M., Ph.D. Candidate (St. Petersburg University,
School of Law); LL.M. (University of Hamburg, School of Law);
LL.M. (University of Illinois, College of Law);

363 PROF. AASHISH YADAV**Assistant Professor**

B.A. (Hons.) (University of Delhi); LL.B. (University of Delhi);
LL.M. (London School of Economics, London)

364 PROF. (DR.) FRANKA ZLATIC**Assistant Professor**

B.A.; M.A. (University of Rijeka, Croatia) 2016; 2018
Ph.D. Candidate (University of Nottingham)

365 MR. ADITYA AGRAWAL**Lecturer**

B.A LL.B. (Hons.) (KITJ University, Bhubaneswar);
LL.M. (NLU, Delhi)

366 MS. ANUSHKA AGARWAL**Lecturer**

B.Com (University of Delhi); M.Com (University of Delhi);
Ph.D. Candidate. (IIT, Delhi)

367 MS. AKSHATA ASHOK AHIRE**Lecturer**

B.A. (University of Mumbai);
LL.B. (New Law College, University of Mumbai); LL.M. (TISS, Mumbai)

368 MS. GAURI ANAND**Lecturer**

BA LLB (National University of Advanced Legal Studies)
LL.M. (Lund University of Iceland);

369 MS. ANUPRIYA**Lecturer**

B.A LL.B. (IPES);
LL.M. (Tiburg University)

360 MR. MOHAMMAD AQIL**Lecturer**

B.A. (Jawaharlal Nehru University, New Delhi);
M.Phil. (Jawaharlal Nehru University, New Delhi);
Ph.D. candidate (Jawaharlal Nehru University, New Delhi)

361 MS. KANIKA ARORA**Lecturer & Assistant Dean**

B.M.S. (Jai Hind College, Mumbai University)
LL.B. (University of Delhi); LL.M. (University of Cambridge)

362 MS. ARCHANA BABURAJ**Lecturer**

BA LLB (Kerala University)
LL.M. (Lund University, Sweden);

363 MS. MAHIMA BALAJI**Lecturer & Assistant Dean**

B.A LL.B (Hons.) (O.P.Jindal Global University);
BCL (University of Oxford);

364 MS. YOGITA BANGAR**Lecturer**

BBA LLB (Northcap University); LL.M (NLSIU, Bangalore);
M.Phil (Cambridge University)

365 MS. GOWRI MURALI BELAWADI**Lecturer**

B.A LL.B. (Christ University);
LL.M. (Queen Mary University of London) (2022)

366 MS. KRUSHA BHATT**Lecturer**

B.B.A LL.B. (Auro University);
LL.M (University of East Anglia, UK)

367 MS. JIGISHA BHATTACHARYA**Lecturer**

B.A. (Presidency University, Kolkata);
M.F. (Jawaharlal Nehru University, New Delhi);
M.Phil. (CSSSC, Kolkata)

368 MS. SWATI BISEN**Lecturer**

B.A LL.B. (GNLU, Gandhinagar);
LL.M. (Tufts University)

369 MS. IRA CHADHA**Lecturer**

B.A LL.B. (Hons.) (WBUJUS, Kolkata);
LL.M. (University of Cambridge);
Ph.D. candidate (University of Cambridge)

370 MR. AMAN CHANDOLA**Lecturer**

B.B.A, LL.B. (Gujarat National Law University);
LL.M. (University of Cambridge)

371 MR. AVINEET SINGH CHAWLA**Lecturer & Assistant Dean**

B.A, LL.B (Panjab University, Patiala);
LL.M. (Queen Mary University, London)

372 MS. NATASHA CHISWA**Lecturer**

LLB (University of South Africa)
LLM(University of Western Cape)

373 MS. BEDASRUTI DAS**Lecturer**

BA, LLB (University of Calcutta)
LLM(University of Sheffield);

374 MS. ISHA DAS**Lecturer**

B.A, LL.B. (Guru Gobind Singh Indraprastha University, Delhi)
LL.M. (University College London)

375 MS. ABHIPSA UPASANA DASH**Lecturer & Assistant Dean**

BBA-LLB (Symbiosis International University)
LLM(Pennsylvania State University);

376 MS. VIRANGNA DHILLON**Lecturer**

B.A, LL.B. (D.P.Jindal Global University);
LL.M. (Queen Mary University London)

377 MR. VELUGULA DHYUTHI**Lecturer**

B.A. (Hons.) (University of Kent);
M.Sc. (London School of Economics, London)

378 MR. DIGVIJAY**Lecturer**

B.E (Panjab University); LL.B. (Faculty of Law, University of Delhi);
LL.M. (SGT University); Ph.D. (OPJS University)

379 MS. AKANKSHA DUBEY**Lecturer**

B.A, LL.B. (D.P.Jindal Global University);
LL.M. (King's College London)

380 MR. PAULINE LEPSONGAH FORJE**Lecturer**

LL.B. (Kingston University);
LL.M. (Queen Mary University of London)

381 MR. AMAN GUPTA**Lecturer**

BBA LL.B. (JGU); LL.M. (JGU);
LL.M. (Queen Mary University of London)

382 MS. ANUBHA GUPTA**Lecturer**

B.A, LL.B. (Amity University);
LL.M. (Queen Mary University of London)

383 MS. PRIYA GARG**Assistant Lecturer**

B.A, LL.B. (Hons.) (WIRNULS, Kolkata);
B.C.L. (University of Oxford)

384 MS. SAMIKSHA GUPTA**Lecturer**

BBA, LLB (Symbiosis Law School, Pune)
LLM(University of Peace, UNICRI, Italy);

385 MR. SAMUDRANIL GUPTA**Lecturer**

B.A., M.A. (University of Calcutta);
M. Phil. (Gandharva Vastu University, New Delhi);
Ph.D. candidate (Jawaharlar Nehru University, New Delhi)

386 MS. VANDANA GYANCHANDANI**Lecturer**

B.A, LL.B. (Hons.) (D.P.Jindal Global University);
LL.M. (Graduate Institute, Geneva)

387 MS. JUHI LOHANI HARJANI**Lecturer**

B.A (Delhi University); M.A (Delhi University);
Ph.D Pursuing (IIT, Delhi)

388 MS. SNEHA HOODA**Lecturer**

B.Sc. (Hons.) (Amity University);
LL.B. (Faculty of Law, University of Delhi);
LL.M. (NLU, Delhi)

389 MS. SONAL HUNDLANI**Lecturer**

BBA LL.B. (Symbiosis Pune);
LL.M. (Pennsylvania State University)

390 MR. ANMOL JAIN**Lecturer**

B.A., LL.B. (National Law University, Jodhpur);
LL.M. (Yale Law School)

391 MS. APOORVI JHA**Lecturer**

B.A, LL.B. (D.P.Jindal Global University); LL.M. (Instituto Superior de
Derecho y Economía, Spain); Master in Global Sports Management and
Legal Skills (Instituto Superior de Derecho y Economía, Spain)

392 MS. SURBHI KARWA**Lecturer**

B.A, LL.B (Hons.) (RMLNLU, Lucknow);
LL.M (NLU, Delhi);
BCL (University of Oxford)

393 MS. RIBHA KASANA**Lecturer**

B.Com. (University of Delhi); LL.B. (University of Delhi);
LL.M. (JGU); LL.M. (King's College London) Pursuing

394 MS. BHAWNA KATARIA**Lecturer and Faculty Coordinator,
Admissions & Outreach**

B.Sc.; LL.B. (University of Delhi);
LL.M. (Queen Mary University of London)

395 MS. NAVDEEP KAUR**Lecturer**

B.Sc. (Hons.) (Panjab University);
MBA (Panjab University);
Ph.D. candidate (Panjab University)

396 MR. PRANJAL KHARE**Lecturer**

B.A, LL.B. (Hons.) (RGNUL, Panjab);
LL.M. (NLU, Bhopal)

397 MS. UPASANA KHATTRI**Lecturer**

BBA, LL.B. (Banasthali University);
LL.M. (NLU, Delhi)

398 MS. VIDUSHI KOTHARI**Lecturer**

B.A. (The George Washington University); LL.B. (Government Law
College, Mumbai); LL.M. (Indian Law Institute, New Delhi);
Ph.D. candidate (JGU)

399 MS. PALADUGU LEELA TARANG KRISHNA**Lecturer**

BBA LLB (Hons.) (D.P.Jindal Global University)
LL.M. (King's College, London);

400 DR. KARTIKEYA KUMAR**Lecturer**

B.A. (University of Delhi); M.A. (D.P. Jindal Global University);
Queen Mary University of London; M.Sc. (University College London);
Ph.D. (University of Edinburgh) 2023

401 MR. KUNAL KUMAR**Lecturer**

B.A, LL.B (Guru Gobind Singh Indraprastha University, Delhi)
LL.M. (Pepperdine University);

402 MS. SHYAMALI KUMAR**Lecturer**

BBA LLB (Hons.), Nirma University; LL.M. GNLU ;
LL.M. Groningen University

403 MS. SALONI KUMARI**Lecturer**

B.A, LL.B. (Hons.) (NUSRL, Ranchi);
LL.M. (NLU, Delhi)

404 MR. SHASHANK MAHESHWARI**Lecturer**

B.A, LL.B. (Hons.) (Amity Law School);
LL.M. (NLU, Delhi)

405 MR. DEEPAYAN MALAVIYA**Lecturer**

B.A, LL.B. (Faculty of Law, University of Lucknow);
LL.M. (TISS, Mumbai)

406 MS. PAYAL MANGLA**Lecturer**

LL.B. (D.P.JGU);
LL.M. (Birbeck College, University of London)

407 MS. NAYANIKA MAJUMDAR**Lecturer**

B.A, LL.B. (National Law Institute University, Bhopal);
LL.M. (London School of Economics and Political Sciences)

408 MR. PARTH MANIKTALA**Lecturer**

B.A. (Hons.), LL.B. (Delhi University);
LL.M. (Harvard University)

409 MR. HARSH MANO HAR**Lecturer**

B.A, LL.B. (Nirma University);
LL.M. (Paris State University)

410 MS. EYSHA MARYSHA**Lecturer**

B.A, LL.B. (H) (JGU)
LL.M. (King's College, London)

411 MR. IDRISH MOHAMMED**Lecturer**

B.A, LL.B. (Jamia Millia Islamia, New Delhi);
LL.M. SOAS, University of London)

412 MR. PARTH PANKAJ NAIETHANI**Lecturer**

B.A, LL.B. (RMLNLU, Lucknow);
LL.M. (D.P.Jindal Global University)

413 MS. SAMPADA NAYAK**Lecturer**

B.A, LL.B. (National Law University, Odisha);
LL.M. (SOAS, University of London)

414 MR. TANK PRASAD NEUPANE**Lecturer**

B.Sc., M.Sc. (Tribhuvan University); M.B.A. (Sikkim Manipal University);
M.Phil. (Kathmandu University)

415 MR. ALEX SILVA OLIVEIRA**Lecturer**

B.A. (University of São Paulo Law School);
M.A. (University of São Paulo);
Ph.D. Candidate (University of Montreal)

416 MR. RAJ KAPIL P**Lecturer**

B.E (Anna University); M.A. (University of Madras);
M.A. (Institute of Distance Education, University of Madras)

417 MS. NIDHI PADAM**Lecturer**

B.A, LL.B. (National University of Study and Research in Law,
Ranchi); LL.M. (Queen Mary University of London)

418 MR. PRAKASHAR PANDEY**Clinical Lecturer-of Law**

Faculty of Law, (Lloyd Law College);
Master of Laws (FERI School of Advance Studies, Delhi)

419 MS. NISHTHA PANT**Lecturer**

B.A, LL.B. (Panjab University);
LL.M. (GNLU, Gandhinagar)

420 MR. BHAT CHAITRA RAJAGOPALA**Lecturer**

B.B.A, LL.B. (Karnataka State Law University);
LL.M. (GNLU); LL.M. (University of Cambridge) 2023

421 MR. MOHAK RANA**Lecturer**

BBA LL.B. (NMIMS, Mumbai);
LL.M. (University of New Hampshire)

422 MR. AQA RAZA**Lecturer**

B.A, LL.B. (Hons.); LL.M. (Aligarh Muslim University)

423 MR. KAUSTAV SAHA**Lecturer**

BALL(BH) (NLSIU, Bangalore);
BCL (University of Oxford);

- 424. MS. ARSHIA SANA**
Lecturer
B.A. LL.B. (FRLNLU, Lucknow); LL.M. (HNU, Raipur); LL.M. (University of Westminster)
- 425. MS. APOORVA SATAPATHY**
Lecturer
BBA LL.B. (NLU, Odisha); LL.M. (University of Cambridge)
- 426. MR. SIDDHARTH SAXENA**
Lecturer
BA LL.B. (O.P.J.S. Global University); LL.M. (University of Oxford)
- 427. MS. PARKHI SAXENA**
Lecturer
B.A. LL.B. (Nirma University); LL.M. (University of Essex)
- 428. MS. SANYUKTA SAXENA**
Lecturer
B.A. LL.B. (Hons.) (Amity University); LL.M. (GNLU, Gandhinagar)
- 429. MS. SUNIDHI SETIA**
Lecturer
B.A. LL.B. (Hons.) (Nirma University); LL.M. (NALSAR, Hyderabad)
- 430. MS. PARIDHI SHARMA**
Lecturer
BBA LL.B. (Hons.) (KIT University, Bhubaneswar); LL.M. (NLU, Bhopal)
- 431. MS. SAKSHI SHARMA**
Lecturer
B.A. LL.B. (GNLU); LL.M. (University of California, Berkeley)
- 432. MS. SHREYA SHREEKANT**
Lecturer & Assistant Dean
B.A. LL.B. (Hons.) (GNLU, Gandhinagar); LL.M. (Queen Mary University of London)
- 433. MR. LEWIS NJABULO SIBANDA**
Lecturer
LL.B. (University of South Africa); LL.M. (University of Sussex)
- 434. MS. AISHWARYA SINGH**
Lecturer
B.A. LL.B. (O.P.J.GU); BCL (University of Oxford)
- 435. MS. AYUSHI SINGH**
Lecturer
BBA LL.B. (Guru Gobind Singh Indraprastha University); LL.M. (University of Cambridge)
- 436. MR. HEMENDRA SINGH**
Lecturer
B.A. LL.B. (Hons.) (RGNU, Punjab); LL.M. (NLU, Jodhpur)
- 437. MS. JAYANTI SINGH**
Lecturer
B.A. (Hons.), LL.B. (University of Delhi); LL.M. (London School of Economics, London)
- 438. MS. NEHA SINGH**
Lecturer
B.A. LL.B. (IPES, Dehradun); LL.M. (University of Birmingham);
- 439. MS. SHIVANGI SINGH**
Lecturer
LL.B. (GNLU, Gandhinagar); LL.M. (University College London)
- 440. MS. DIVYA SRIDHAR**
Lecturer
F.Com. LL.B. (Tamil Nadu National Law School); LL.M. (King's College London)
- 441. MR. ANUJAY SHRIVASTAVA**
Lecturer
B.A. LL.B. (O.P.J.GU); LL.M. Candidate (University of Cambridge)
- 442. MS. SHUBHANGI SRIVASTAVA**
Lecturer & Assistant Dean
B.A. LL.B. (Hons.) (NMIMS, Mumbai); LL.M. (Queen Mary University of London)
- 443. MR. PURSWANI PRATIK SURESH**
Lecturer
B.Sc. (Singhania University); Master's Degree in Aviation Law and Air Transport Management (NALSAR, Hyderabad); LL.B. (Symbiose University); LL.M. (Leiden University)
- 444. MS. GARGI TYAGI**
Lecturer
BBA LL.B. (ICFAI Law School, Dehradun); LL.M. (University of Edinburgh);
- 445. MS. PRACHI TYAGI**
Lecturer
B.A. LL.B. (Hons.) (Guru Gobind Singh Indraprastha University, Delhi); LL.M. (GNLU, Gandhinagar)
- 446. MR. JOSEY TOM**
Lecturer
B.A. (Christ University, Bangalore); M.A., M.Phil., Ph.D. candidate (Jawaharlal Nehru University, New Delhi)
- 447. MS. JARIN TASNIM URBI**
Lecturer & Assistant Dean
LL.B. (Japanmath University); LL.M. (Penn State Law, The Pennsylvania State University)
- 448. MR. UTKARSH**
Lecturer
B.A. LL.B. (Hons.) (DSNLU, Visakhapatnam); LL.M. (NLU, Bhopal)
- 449. MS. APARNA VENKATACHALAM**
Lecturer
B.A. (University of Mumbai); LL.B. (New Law College, University of Mumbai); LL.M. (TISS, Mumbai)
- 450. MR. MOHIT VERMA**
Lecturer
B.Com., M.Com. (University of Delhi); Ph.D. Candidate (IIM, Sambalpur)
- 451. MS. REIGHA YANGZOM**
Lecturer
B.A. LL.B. (WBUJLS, Kolkata); LL.M. (SOAS University of London) (2022)
- 452. MR. KOLAWOLE OLALEKAN AFUWAPE**
Assistant Lecturer
LL.B. (Obafemi Awolowo University); LL.M. (Nigerian Law School, Abuja); LL.M. (Lagos State University, Ojo); LL.M. (The University of Dundee)
- 453. MS. ANANYA AGARWAL**
Assistant Lecturer
BA LL.B. (Galgotias University); LL.M. (Queen Mary University, London)
- 454. MR. APOORV AGARWAL**
Assistant Lecturer
B.A. LL.B. (University of Pune); LL.M. (University of Edinburgh)
- 455. MS. HIMAKSHI ALARIA**
Assistant Lecturer
B.A LL.B. (University of Rajasthan); LL.M. (Queen Mary University of London)
- 456. MS. THOTAKURA SRI ANUSHA**
Assistant Lecturer
B.A LL.B. (O.P.Jindal Global University); LL.M. (University of California, Berkeley)
- 457. MR. FARAZ ARIF**
Assistant Lecturer
B.A. LL.B. (JGU); LL.M. (University of Bristol)
- 458. MR. ISHAN VIJAY AVADHANAM**
Assistant Lecturer
B.A. LL.B. (O.P.J.GU); LL.M. (Queen Mary University of London)
- 459. MR. AJMAL AYOOB**
Assistant Lecturer
B.A LL.B. (Hons.) (Aligarh Muslim University); LL.M. (TISS, Mumbai)
- 460. MS. AVNI BAHRİ**
Assistant Lecturer
B.A., LL.B. (University of Delhi); LL.M. (Fata Institute of Social Sciences, Mumbai)
- 461. MS. BIDISHA BANDYOPADHYAY**
Assistant Lecturer
BBA LL.B. (KIT Law School, KİT); LL.M. (University of Liverpool)
- 462. MR. RITURAJ SINGH CHAUHAN**
Assistant Lecturer
B.A., LL.B. (O.P.JGU); LL.M. Candidate (Birbeck University of London)
- 463. MS. JENNIFER MARY CHERIAN**
Assistant Lecturer
BBA LL.B. (Christ University, Bangalore); LL.M. (University of Edinburgh)
- 464. MS. TANVI CHITRANSHI**
Assistant Lecturer
B.A. LL.B. (West Bengal National University of Juridical Sciences); LL.M. (SOAS University of London)
- 465. MS. DEBOSMITA CHOUDHURI**
Assistant Lecturer
B.B.A LL.B. (ICFAI Dehradun); LL.M. (LSE)
- 466. MR. RAJAT DATTA**
Assistant Lecturer
B.A. (University of Delhi); LL.B. (Amity University); LL.M. (Queen Mary University of London)
- 467. MR. RAHUL DESARDA**
Assistant Lecturer
BA LL.B. (O.P. Jindal Global University); LL.M. Candidate (The Fletcher School of Law and Diplomacy, Tufts University)
- 468. MR. APOORV GUPTA**
Assistant Lecturer
B.A. LL.B. (ICFAI Law School); LL.M. (The London School of Economics)
- 469. MS. SAUDAMINI GUPTA**
Assistant Lecturer
B.A. LL.B.; LL.M. (NUSRL, Ranchi); LL.M. (University of Florida)
- 470. MS. SANJANA HOODA**
Assistant Lecturer
B.A LL.B. (JGU); LL.M. (Melbourne Law School)
- 471. MS. AISHWARYA JAIN**
Assistant Lecturer
B.A. LL.B. (Hons.), NLS, Bangalore; LL.M. (NUS) India
- 472. MS. MAHAK JAIN**
Assistant Lecturer
BBA LL.B. (O.P. Jindal Global University); LL.M. (JGU School of Law)
- 473. MR. SACHIN KALA**
Assistant Lecturer
B.A. LL.B. (Rajiv Gandhi National University of Law, Patiala); LL.M. (Queen Mary University of Law)
- 474. MS. VIBHANA KANWAR**
Assistant Lecturer
B.A. (University of Delhi); LL.B. (Amity University, Noida); LL.M. (University of Cambridge)
- 475. MR. KARAN KATARIA**
Assistant Director, Admissions & Outreach and Assistant Lecturer
B.B.A. LL.B. (The NorthCap University); LL.M. (The London School of Economics and Political Science)
- 476. MS. RISHIKA KAUSHIK**
Assistant Lecturer
B.A. (University of Delhi); M.A. (University of Sussex)
- 477. MS. ISHITA KHETARPAL**
Assistant Lecturer
B.A. LL.B. (IP University); LL.M. (NLU Jodhpur); Part time Ph.D. (GD Goonka University, Gurgaon)

478 MS. STUTI LAL**Assistant Lecturer**

BBA LL.B. (NLU, Patna);
LL.M. (O.P.J.S. Global University)
Ph.D. Candidate (JGU)

479 MR. ISH MAINI**Assistant Lecturer**

B.A. LL.B. (JGU);
LL.M. (University of Glasgow, Scotland, UK)

480 MS. ADWITIA MAITY**Assistant Lecturer**

LL.B. (University of Calcutta);
LL.M. (University of Edinburgh)

481 MR. JIBRAAN MANSOOR**Assistant Lecturer**

B.A. (Ashoka University); LL.B. (O.P.J.S. Global University);
LL.M. (Benjamin N. Cardozo Law School, New York)

482 MR. ADWAIT MITRA**Assistant Lecturer**

B.A. LL.B. (University of Calcutta);
LL.M. (London School of Economics and Political Science)

483 MS. SAMANVI NARANG**Assistant Lecturer**

B.A. LL.B. (Hons.) (UPES Dehradun);
LL.M. (NALSA, Hyderabad)

484 MS. SURAVI PODDER**Assistant Lecturer**

B.A. History (St. Xavier's College, Mumbai); LL.B. (JGU)
LL.M. (The Fletcher School of Law and Diplomacy)
LL.M. (Harvard Law School)

485 MS. SHIVANGI PRIYA**Assistant Lecturer**

B.A. LL.B. (Guru Gobind Singh Indraprastha University);
LL.M. (Pennsylvania State University)

486 MS. SHUCHI PUROHIT**Assistant Lecturer, JGIS and Assistant Director,
Office of Alumni Relations**

B.A. LL.B. (O.P.J.S. Global University);
LL.M. (Tufts University)

487 MS. NANDINI RAJESH**Assistant Lecturer**

B.A. LL.B. (Christ - Deemed To Be University, Bengaluru);
LL.M. (The London School of Economics and Political Science, London)

488 MS. PRAGYA RAKSHITA**Assistant Lecturer**

B.A. LL.B. (National University of Study and Research in Law);
LL.M. (University of Essex)

489 MR. HARIKARTIK RAMESH**Assistant Lecturer**

B.A. LL.B. (National Law University, Delhi);
LL.M. (University of Cambridge)

490 MR. SURODEEP SANJAL**Assistant Lecturer**

B.A. LL.B. (Amity University);
LL.M. (University of Sussex)

491 MS. NAYONIKA SEN**Assistant Lecturer**

B.A. LL.B. (O.P.J.S.);
LL.M. (Birkbeck, University of London)

492 MS. SHARMISHTHA SHARMA**Assistant Lecturer**

B.A. LL.B. (Guru Gobind Singh Indraprastha University, Delhi);
LL.M. (University of Illinois, Urbana-Champaign, College of Law)

983 MR. SAHIBNOOR SINGH**Assistant Lecturer**

B.A. LL.B. (Hons.) (O.P.J.S. Global University);
LL.M. (University of Toronto)

494 MS. SANJANA SINHA**Assistant Lecturer**

B.A. LL. B. (O.P.J.S.);
LL.M. (King's College London)

495 MR. SRUJAN SOMAL**Assistant Lecturer**

B.A. LL.B. (Dr. Ram Manohar Lohiya National Law University) 2022;
M.Phil. (University of Cambridge)

496 MS. UTKARSHINEE VERMA**Assistant Lecturer**

B.A. LL.B. (University of Petroleum and Energy Studies, Dehradun);
LL.M. (University of Edinburgh)

497 MS. GAYATRI VIRMANI**Assistant Lecturer**

B.A., LL.B. (O.P.J.S. Global University);
LL.M. (Birkbeck University of London)

498 MS. SHALINEE S VISHWAKARMA**Assistant Lecturer**

B.A. LL.B. (Hons.) (Dr. DY Patil College of Law, University of Mumbai);
LL.M. (O.P.J.S. Global University)

499 MR. NATHAN JOHN WHETTON**Assistant Lecturer & Faculty Coordinator,
International Collaboration**

LL.B. (King's College London and Università Commerciale
Luigi Bocconi); LL.M. (London School of Economics)

500 MS. NIMMY SAIRA ZACHARIAH**Assistant Lecturer**

B.A. LL.B. (University of Kerala);
LL.M. (NLU, Delhi)

501 MR. SATISH KUMAR**Senior Research Fellow**

BBA, LL.B. (Hons.) (NLU, Patna);
LL.M. (NLU, Bhopal)

502 MS. AKANSHA YADAV**Senior Research Fellow**

B.A. LL.B. (University of Allahabad);
LL.M. (NLU, Bhopal)





ADMISSION PROCEDURE

LNAT-UK TEST 2025

LNAT-UK is a standardized test developed by a consortium of UK universities to fairly and effectively assess a candidate's potential for undergraduate law studies. Admission to the five-year B.Com. LL.B. (Hons.), B.B.A. LL.B. (Hons.), and B.A. LL.B. (Hons.) programs at Jindal Global Law School (JGLS) will be based on performance in this test. The LNAT is designed and calibrated by Edexcel for Pearson VUE, the world's leading computer-based testing and assessment organization. Students can take the LNAT-UK at their convenience, with over 500 test centers available in 165 countries. A practice test is available on the LNAT-UK website.

SELECTION PROCESS

Register online for the LNAT-UK entrance test by logging on to: <https://lnat.ac.uk/>
The LNAT-UK registration fee is **£120** + Taxes, the fee can be paid online.
This test is Computer Based Test (CBT) conducted in 500 cities in 165 countries.

SCAN

QR code to visit
to register for
LNAT-UK



Course
Duration

5 YEAR

Programme
Fee:

₹ 6,50,000/-per annum*

Residential
Fee:

₹ 3,35,000/-per annum*

Application
Fee:

₹ 1000/-

Refundable
Security Deposit

₹ 50,000/- **

*The programme fee and residential fee are subject to an annual increase of upto 10%.

**Fully refundable Security deposit of Rs. 50,000 shall be collected at the time of admission as per university rules.

Minimum Eligibility:

10+2 Minimum Eligibility with 45% & above from any stream.

Scholarships

Merit-cum-means scholarship shall be awarded to students qualifying LNAT-UK subject to parental ITR criteria as defined by university.

AMENITIES & FACILITIES

University hall of residence for students consists of several blocks of buildings designed by a French architect. University has:

- 24x7 health center with medical officer.
- Center for wellness and counselling.
- Washex hospitality solutions.
- 24x7 Security – over 1080 CCTV cameras.
- State of the art sports facility including badminton, tennis, basketball courts, cricket ground, football, volleyball, swimming pool, indoor games, gymnasium, yoga & aerobics.
- Multi-cuisine dining facility.
- Fully functional branch of ICICI bank with ATMs (ICICI bank and others) on several locations.
- Post office extension/courier office.



FOOD COURT

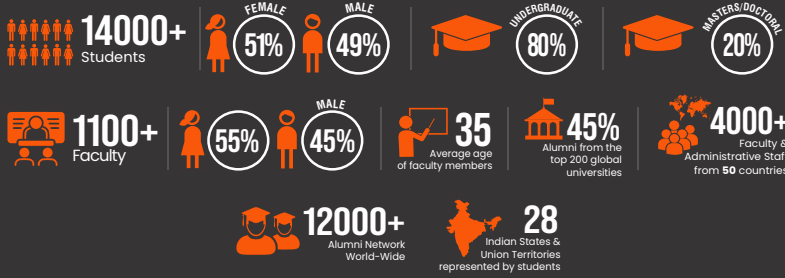
A world class food court - Biswamil Bistro reflects the global aspirations and local traditions of JGU. Outlets at this food court provide multi-cuisine options through brands such as Dominos, Subway, Keventers, Punjab Grill, Bercos, 34 Chowringee Lane, Breakfast Round the Clock, Moti Mahal, Chayos, etc.

OTHER FACILITIES

- Café Coffee Day Tuck Shop
- Juice & More Tuck Shop
- Amul Ice Cream Parlor
- Chai Tapri
- Convenience Store
- Fab Café Tuck Shop
- Looks Tailoring House
- Natio Beauty Parlour
- Just Look Men's Salon
- Nestle Tuck Shop
- Wellness Pharmacy
- Honey Hut



JGU @ A GLANCE



12 SCHOOLS ▶

45+ Programmes

30+ Undergraduate Programmes
15+ Postgraduate Programmes
1 Doctoral Programme

Jindal Global Law School Nehru Law Centre Sector	JINDAL GLOBAL BUSINESS SCHOOL	Jindal School of International Affairs Nehru Law Centre Sector	Jindal School of Environment and Public Policy Nehru Law Centre Sector	Jindal School of Liberal Arts & Humanities Nehru Law Centre Sector	Jindal School of International Communication & Journalism Nehru Law Centre Sector
JINDAL SCHOOL OF ART & ARCHITECTURE	JINDAL SCHOOL OF BANKING & FINANCE	JINDAL SCHOOL OF ENVIRONMENT & SUSTAINABILITY	Jindal School of Psychology & Counselling	JINDAL SCHOOL OF LANGUAGES & LITERATURE	JINDAL SCHOOL OF PUBLIC HEALTH & HUMAN DEVELOPMENT

RESEARCH



INTERNATIONAL COLLABORATIONS



ACCREDITATION & RANKINGS

UGC Granted Autonomy by University Grants Commission	Swachh Campus Ranking 2019 Ranked 2nd Government of India	RANKED NO.1 PRIVATE UNIVERSITY IN INDIA QS WORLD UNIVERSITY RANKINGS 2023	RANKED NO.1 LAW SCHOOL IN INDIA QS WORLD UNIVERSITY RANKINGS 2024 BY SUBJECT	CONFERRED THE STATUS OF AN INSTITUTION OF EMINENCE BY THE MINISTRY OF EDUCATION GOVERNMENT OF INDIA
--	---	---	--	---

For Admissions, Contact

Mr. Abhay Ojha 74197 48931 | Mr. Shesh N Shukla 74196 13569
 Mr. Aditya Anand 74197 48954 | Mr. Vashudev Parashar 74196 13587
 Ms. Pooja Kaur 74198 65748 | Ms. Parvi Dang 74198 65747
 Ms. Devyani Khare 893 0110 676



For Admissions Scan the QR Code

For any specific query, please write to the Director of Law Admissions at: apmishra@jgu.edu.in



O.P. JINDAL GLOBAL
 INSTITUTION OF MANAGEMENT STUDIES TO BE
UNIVERSITY
 A Private University Promoting Public Service

www.jgu.edu.in



📍 Sonipat-131001, (NCR of Delhi)

JGU - An Initiative of Jindal Steel & Power Foundation